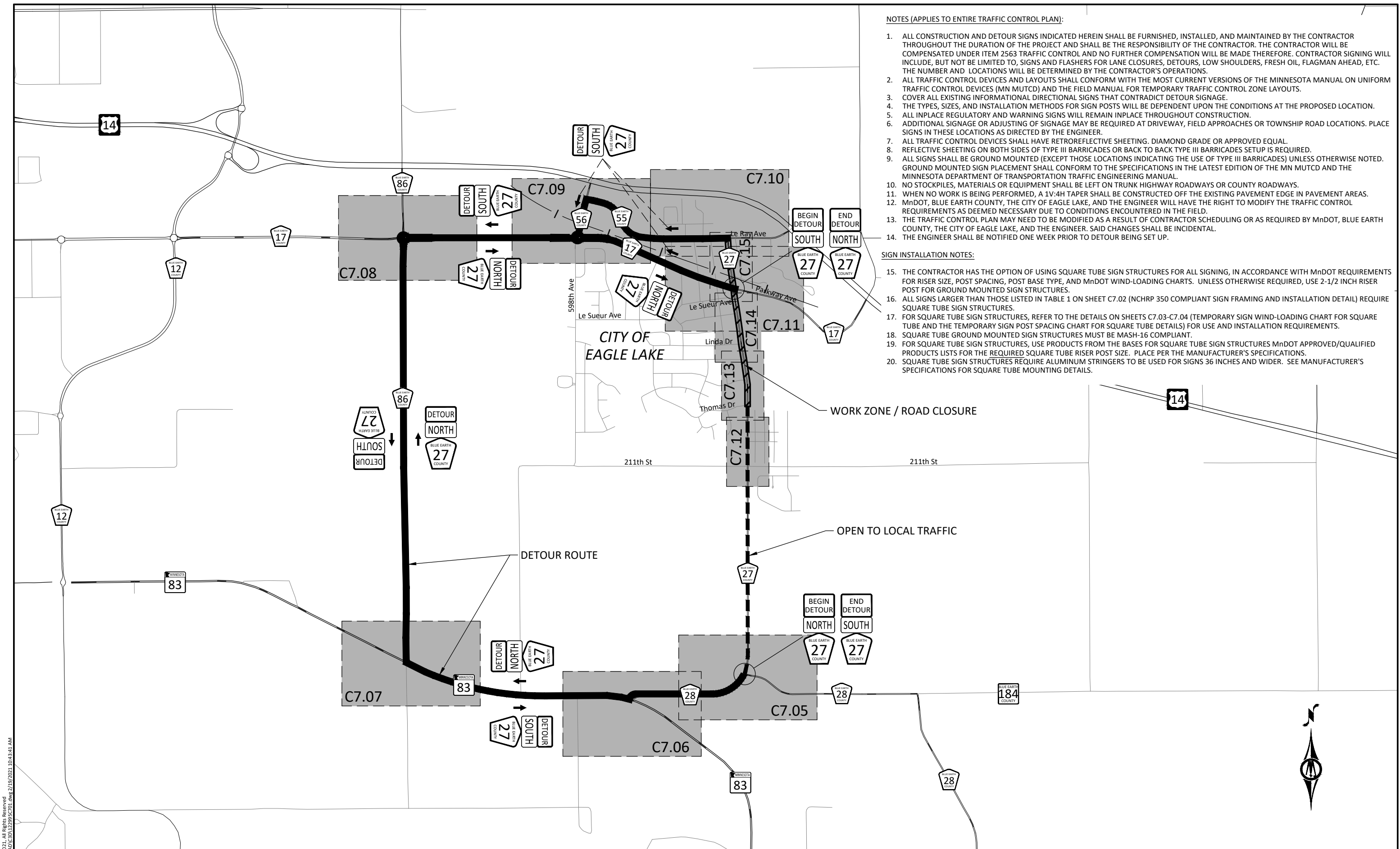


NOTES (APPLIES TO ENTIRE TRAFFIC CONTROL PLAN):

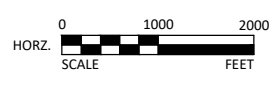
1. ALL CONSTRUCTION AND DETOUR SIGNS INDICATED HEREIN SHALL BE FURNISHED, INSTALLED, AND MAINTAINED BY THE CONTRACTOR THROUGHOUT THE DURATION OF THE PROJECT AND SHALL BE THE RESPONSIBILITY OF THE CONTRACTOR. THE CONTRACTOR WILL BE COMPENSATED UNDER ITEM 2563 TRAFFIC CONTROL AND NO FURTHER COMPENSATION WILL BE MADE THEREFORE. CONTRACTOR SIGNING WILL INCLUDE, BUT NOT BE LIMITED TO, SIGNS AND FLASHERS FOR LANE CLOSURES, DETOURS, LOW SHOULDERS, FRESH OIL, FLAGMAN AHEAD, ETC. THE NUMBER AND LOCATIONS WILL BE DETERMINED BY THE CONTRACTOR'S OPERATIONS.
2. ALL TRAFFIC CONTROL DEVICES AND LAYOUTS SHALL CONFORM WITH THE MOST CURRENT VERSIONS OF THE MINNESOTA MANUAL ON UNIFORM TRAFFIC CONTROL DEVICES (MN MUTCD) AND THE FIELD MANUAL FOR TEMPORARY TRAFFIC CONTROL ZONE LAYOUTS.
3. COVER ALL EXISTING INFORMATIONAL DIRECTIONAL SIGNS THAT CONTRADICT DETOUR SIGNAGE.
4. THE TYPES, SIZES, AND INSTALLATION METHODS FOR SIGN POSTS WILL BE DEPENDENT UPON THE CONDITIONS AT THE PROPOSED LOCATION.
5. ALL INPLACE REGULATORY AND WARNING SIGNS WILL REMAIN INPLACE THROUGHOUT CONSTRUCTION.
6. ADDITIONAL SIGNAGE OR ADJUSTING OF SIGNAGE MAY BE REQUIRED AT DRIVEWAY, FIELD APPROACHES OR TOWNSHIP ROAD LOCATIONS. PLACE SIGNS IN THESE LOCATIONS AS DIRECTED BY THE ENGINEER.
7. ALL TRAFFIC CONTROL DEVICES SHALL HAVE RETROREFLECTIVE SHEETING. DIAMOND GRADE OR APPROVED EQUAL.
8. REFLECTIVE SHEETING ON BOTH SIDES OF TYPE III BARRICADES OR BACK TO BACK TYPE III BARRICADES SETUP IS REQUIRED.
9. ALL SIGNS SHALL BE GROUND MOUNTED (EXCEPT THOSE LOCATIONS INDICATING THE USE OF TYPE III BARRICADES) UNLESS OTHERWISE NOTED. GROUND MOUNTED SIGN PLACEMENT SHALL CONFORM TO THE SPECIFICATIONS IN THE LATEST EDITION OF THE MN MUTCD AND THE MINNESOTA DEPARTMENT OF TRANSPORTATION TRAFFIC ENGINEERING MANUAL.
10. NO STOCKPILES, MATERIALS OR EQUIPMENT SHALL BE LEFT ON TRUNK HIGHWAY ROADWAYS OR COUNTY ROADWAYS.
11. WHEN NO WORK IS BEING PERFORMED, A 1V:4H TAPER SHALL BE CONSTRUCTED OFF THE EXISTING PAVEMENT EDGE IN PAVEMENT AREAS.
12. MnDOT, BLUE EARTH COUNTY, THE CITY OF EAGLE LAKE, AND THE ENGINEER WILL HAVE THE RIGHT TO MODIFY THE TRAFFIC CONTROL REQUIREMENTS AS DEEMED NECESSARY DUE TO CONDITIONS ENCOUNTERED IN THE FIELD.
13. THE TRAFFIC CONTROL PLAN MAY NEED TO BE MODIFIED AS A RESULT OF CONTRACTOR SCHEDULING OR AS REQUIRED BY MnDOT, BLUE EARTH COUNTY, THE CITY OF EAGLE LAKE, AND THE ENGINEER. SAID CHANGES SHALL BE INCIDENTAL.
14. THE ENGINEER SHALL BE NOTIFIED ONE WEEK PRIOR TO DETOUR BEING SET UP.

SIGN INSTALLATION NOTES:

15. THE CONTRACTOR HAS THE OPTION OF USING SQUARE TUBE SIGN STRUCTURES FOR ALL SIGNING, IN ACCORDANCE WITH MnDOT REQUIREMENTS FOR RISER SIZE, POST SPACING, POST BASE TYPE, AND MnDOT WIND-LOADING CHARTS. UNLESS OTHERWISE REQUIRED, USE 2-1/2 INCH RISER POST FOR GROUND MOUNTED SIGN STRUCTURES.
16. ALL SIGNS LARGER THAN THOSE LISTED IN TABLE 1 ON SHEET C7.02 (NCHRP 350 COMPLIANT SIGN FRAMING AND INSTALLATION DETAIL) REQUIRE SQUARE TUBE SIGN STRUCTURES.
17. FOR SQUARE TUBE SIGN STRUCTURES, REFER TO THE DETAILS ON SHEETS C7.03-C7.04 (TEMPORARY SIGN WIND-LOADING CHART FOR SQUARE TUBE AND THE TEMPORARY SIGN POST SPACING CHART FOR SQUARE TUBE DETAILS) FOR USE AND INSTALLATION REQUIREMENTS.
18. SQUARE TUBE GROUND MOUNTED SIGN STRUCTURES MUST BE MASH-16 COMPLIANT.
19. FOR SQUARE TUBE SIGN STRUCTURES, USE PRODUCTS FROM THE BASES FOR SQUARE TUBE SIGN STRUCTURES MnDOT APPROVED/QUALIFIED PRODUCTS LISTS FOR THE REQUIRED SQUARE TUBE RISER POST SIZE. PLACE PER THE MANUFACTURER'S SPECIFICATIONS.
20. SQUARE TUBE SIGN STRUCTURES REQUIRE ALUMINUM STRINGERS TO BE USED FOR SIGNS 36 INCHES AND WIDER. SEE MANUFACTURER'S SPECIFICATIONS FOR SQUARE TUBE MOUNTING DETAILS.



© Bolton & Menk, Inc. 2021. All Rights Reserved. A:\BCE\01122995\CAD\CSD\122995\TC01.dwg 2/19/2021 10:43:41 AM



I HEREBY CERTIFY THAT THIS PLAN, SPECIFICATION, OR REPORT WAS PREPARED BY ME OR UNDER MY DIRECT SUPERVISION AND THAT I AM A DULY LICENSED PROFESSIONAL ENGINEER UNDER THE LAWS OF THE STATE OF MINNESOTA.

Brian J. Sarff
 Brian J. Sarff, P.E.
 LIC. NO. 52668 DATE 2/17/2021



DESIGNED	NO.	ISSUED FOR	DATE
BJS		BID	2/17/2021
DRAWN	REP		
CHECKED	BJS		
CLIENT PROJ. NO.	0M1.122995		

CITY OF EAGLE LAKE - BLUE EARTH COUNTY, MINNESOTA
 2021-2022 CSAH 27 (AGENCY STREET) RECONSTRUCTION SAP 007-627-015
 TRAFFIC CONTROL PLAN
 DETOUR OVERVIEW & INDEX MAP

SHEET
 C7.01
 64
 OF
 108