

Postal Patron
Eagle Lake, MN 56024

PRST STD
ECPWSS
US POSTAGE PAID
EAGLE LAKE, MN
PERMIT NO. 10

CITY OF EAGLE LAKE
PO Box 159
705 Parkway Avenue
Eagle Lake, MN 56024



SUPPORT LOCAL BUSINESSES

Visit the Eagle Lake business directory at
<https://eaglelakemn.com/businesses>

SAVE THE DATES

- OCT 11** | Fire Dept. Open House Pancake Breakfast
- OCT 12** | Eagle Lake Elementary Fundraiser at Chipotle • 4-8 p.m.
- OCT 13** | Leaf Pick-Up Begins
- OCT 17** | Tatcho Night • 6-7:30 p.m.
- OCT 18** | Fall Cleanup • 8 a.m. - 12 p.m.
- OCT 25** | Eagle Lake Helping Hands • 9 a.m. - 12 p.m.
- OCT 30** | Halloween Party • 6-8 p.m.

DONATE TO CANS FOR KIDS

The proceeds from the cans go towards the parks

Donating your aluminum cans to "Cans for Kids" is an easy way to support the Eagle Lake parks.



DONATION LOCATION

Near the Eagle Lake water tower
PLEASE DO NOT BAG CANS

Thank you for your help supporting the parks.

EAGLE LAKE **STAFF MEMBERS**

ADMINISTRATION



Jennifer J. Bromeland
City Administrator
jbromeland@eaglelakemn.com



Kerry Rausch
Deputy City Clerk
krausch@eaglelakemn.com



Jodie Barta
Administrative Clerk
jbarta@eaglelakemn.com

CONTACT US

Please contact
City Hall at
507-257-3218
with questions.



BLUE EARTH COUNTY SHERIFF'S OFFICE

EMERGENCIES **9-1-1** • NON-EMERGENCY LINE **507-304-4863**

FIRE DEPARTMENT



**Lieutenant
Mitch Gahler**



**Deputy
Matt Bergmann**



**Deputy
Nick Lewis**



Vern Simpson
Fire Chief
elfdchief@eaglelakemn.com

PUBLIC WORKS



Andrew Hartman
Public Works Director
ahartman@eaglelakemn.com



Michael Nicklay
Public Works Supervisor



Nathan Ruel
Public Works Worker



Jacob Beckmann
Public Works Worker



Jim Anderson
*Part-Time Public
Works Worker*



Taylor Richards
*Part-Time Public
Works Worker*

EAGLE LAKE **ELECTED OFFICIALS**



John Whittington
Mayor
jwhittington@eaglelakemn.com



Nick Lewis
Council
nlewis@eaglelakemn.com



Beth Rohrich
Council
brohrich@eaglelakemn.com



Garrett Steinberg
Council
gsteinberg@eaglelakemn.com



Anthony White
Council
awhite@eaglelakemn.com

CITY OF EAGLE LAKE NEWSLETTER

Fall 2025

POPULATION: 3,346

CITY HALL

PO Box 159
705 Parkway Avenue
Eagle Lake, Minnesota 56024

507-257-3218
eaglelakemn.com



CITY HALL HOURS

Monday - Friday | 7:30 a.m. - 4:30 p.m.

UTILITY PAYMENTS

For utility customer convenience, a drop box is located on the east side of City Hall for utility bill payments and is available seven days a week, 24 hours a day. Utility bill payment options include the following: on-line, auto-pay, by mail, in person, or by phone using a credit or debit card.

PAPERLESS BILL OPTION

eaglelakemn.com/residents/pay-utility-bill

HAVE A QUESTION OR CONCERN?

Please contact us and we will do our best to answer your question or address your concern. City staff can be reached during business hours at City Hall, via phone, email, or electronically using the "CONTACT US" feature on the City of Eagle Lake website at:

eaglelakemn.com/contact

IMPORTANT NOTE

The City of Eagle Lake communicates with residents using its

CITY OF EAGLE LAKE

Website | Email Blasts | Connect App | Mailers

Mailers such as quarterly newsletters mailed to all postal patrons with a 56024-zip code

Questions posed to the City of Eagle Lake via the **Eagle Lake Community Facebook Page** will **not** be answered by City staff as the City of Eagle Lake is not affiliated with the Eagle Lake Community Facebook page. Please contact the City of Eagle Lake directly with any questions that you wish to have answered by City staff.

Stay informed about City news by signing up for City of Eagle Lake news updates.
SIGN UP ONLINE OR CONTACT CITY HALL

EAGLE LAKE CITY COUNCIL MEETINGS



HELD THE FIRST MONDAY OF EVERY MONTH • 6 P.M.

All meetings are open to the public

To view meetings, please visit the City of Eagle Lake website at eaglelakemn.com and click on the "City of Eagle Lake MN City Council Meetings" icon (as shown on the right) on the home page of the website.



WELCOME BAGS



One of the EDA's initiatives is to welcome new residents to the community. One way to do so is to welcome new residents with a welcome bag.

The Welcome Bags contain items donated by businesses and service organizations. The purpose of the welcome bag is to make new residents feel welcome in our community and bring awareness to participating local businesses and service organizations. If you recently moved to Eagle Lake, be sure to stop by City Hall and pick up a welcome bag!

CITY OF EAGLE LAKE UTILITY CUSTOMERS ELECTRONIC PAYMENT OPTIONS ARE AVAILABLE

- Pay by credit card, debit card, check or savings
- Pay immediately, schedule a payment or set up Auto-Pay
- Reduce waste, opt out of paper bills
- View balance due
- Pay online, or mobile or by calling
- Print receipts and bills
- Manager Auto-Pay



Go to <https://eaglelakemn.com/residents/pay-utility-bill>

Register through PSN's website to make your payment or view your bill.

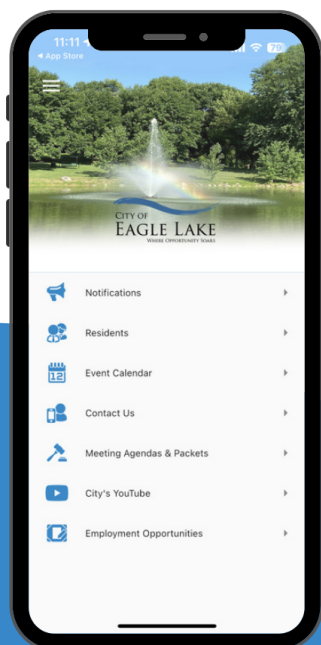


Future visits: payments are 3 easy steps. We will send you an email each time a new bill is ready for viewing.

<https://info.paymentservicenetwork.com/>

Download Eagle Lake Connect

- Receive Notifications
- Access Information
- View Latest Updates
- And more...



THANK YOU FOR RECYCLING

The Eagle Lake Area Lions Club thanks community members for recycling plastic. Over ten benches have been awarded for the Eagle Lake community.

Continue recycling plastic at the following drop off locations:

City Hall
Epiphany Lutheran Church
Eagle Express
Eagle Lake Post Office



Recycle your household bags & wrap into Trex's Earth-friendly composite decking and railing!



FROM THE STORE



✓ Produce bags

✓ Store bags

✓ Ice bags



FROM YOUR PANTRY



✓ Ziploc® & other reclosable bags

✓ Cereal box liners

✓ Case overwrap

✓ Bread bags



FROM YOUR FRONT DOOR



✓ Newspaper sleeves

✓ Dry cleaning bags

✓ Bubble wrap

✓ Plastic e-commerce mailers

Plastics must be clean, dry and free of food and organic residue



NexTrex

trex.com/recycling 1-800-Buy-Trex

CHARGE into Fire Safety™

**Lithium-Ion Batteries
in Your Home**

Eagle Lake Fire Department Open House - Pancake Breakfast

**Saturday, October 11
8:00 a.m.-11:00 a.m.**

101 Plainview Street
Eagle Lake, MN 56024
507-257-3218



fpw.org

©2025 NFPA | Sparky® is a trademark of NFPA.

TATCHO Night!

Like Nachos but with Tator Tots!



Tator Days Fundraiser

FRIDAY, OCT. 17 | 6-7:30 PM
Eagle Lake American Legion

Bring the kids until 8 p.m.!
****Adults, Stay for BINGO****

There will be lots of toppings to top your Tators!
\$10 PER TATCHO-BOAT

Cash bake sale items available!

HELP SUPPORT EAGLE LAKE ELEMENTARY

SUNDAY, OCT. 12 | 4-8 PM | CHIPOTLE

Enjoy a meal at Chipotle, and a portion of the proceeds will go back to the Parent Teacher Organization (PTO). Stop by, grab a bite, and support local students!

Order online for pickup using code L3RPFA8
or show this flyer in the restaurant.



BE THE DIFFERENCE IN YOUR COMMUNITY **BE A LION!**



Meetings held the first Tuesday of every month • 7 p.m.
Eagle Lake City Hall

All are welcome to join the Eagle Lake Area Lions Club.
To learn more, attend a meeting or visit us on Facebook
"Eagle Lake Area Lions Club".

TRY **BUMBEE BALL**

WEDNESDAYS | 6 PM | TENNIS COURTS

Join us while the weather permits. Stop by and give it a try—no racket? No problem! Rackets will be available to use.
Wear tennis shoes and comfortable clothes.



Note: In case of inclement weather, the event will be canceled.

EAGLE LAKE ELEMENTARY

COMMUNITY SPOTLIGHT

Eagle Lake Elementary is a central part of our community, providing high-quality education in a supportive environment. The school's teachers, staff, and administration help students succeed while contributing to the broader community.

Residents can support the school through upcoming events, including the following.

PTO FUND RUN

Thursday, October 9

CHIPOTLE FUNDRAISER

Sunday, October 12 • 4-8 p.m.

Madison Ave Location Only

Use Code L3RPFA8 or show the flyer in-store



These events help sustain school programs and highlight the important role Eagle Lake Elementary plays in the community.

Additionally, Mayor John Whittington and City Administrator Jennifer Bromeland have begun meeting quarterly with Superintendent Peterson and School Board Chair Shannon Sinning to explore ways to collaborate and work together for the betterment of Eagle Lake.



HALLOWEEN PARTY

Eagle Lake Legion

Thursday
October 30th
6-8 pm



Provided:
Hot Dogs and Water
Goodie Bags

Gift Card Drawings every 20 minutes
(must be present to win)

Table Bowling and Zombie Freeze

Pin the Nose on the Pumpkin

Coloring sheets

Ghoulish Music and Photo Opportunities



REPORTING ISSUES AND COMMUNITY SAFETY

It's never a bother to contact law enforcement with questions or concerns.



EMERGENCIES
9-1-1

NON-EMERGENCY LINE
507-304-4863

or call 911 and let the operator know it isn't urgent.

Your vigilance, tips, and willingness to look out for one another make a real difference in keeping our community safe.

Thank you for partnering with us to protect Eagle Lake.

GENERAL QUESTIONS & CONCERNS

For non-law enforcement related questions or concerns, use the **"Contact Us"** feature on the City of Eagle Lake website, call City Hall at **507-257-3218**, or stop by in person. We're here to help and happy to hear from you!

EAGLE LAKE HELPING HANDS COMMUNITY EVENT

Join us this fall for the Eagle Lake Helping Hands event, a youth volunteer initiative focused on helping neighbors in need with fall yard cleanup. This is a great opportunity to give back, connect with others, and earn volunteer hours.

EVENT DETAILS

WHO: Open to Students in Grades 3-12

DATE: Saturday, October 25

Alternate date in case of inclement weather is Nov. 1

LOCATION: Lake Eagle Park Pavilion

TIME: 9:00 a.m. - Noon



Volunteers will start the morning with free coffee, juice, and donuts before heading out in teams to rake leaves and clean up yards, then return for a pizza lunch, prize drawings, and a recap of the day's accomplishments.

The event also fosters positive connections between youth, law enforcement (including Lt. Mitch Gahler and personnel from the Blue Earth County Sheriff's Office), and community organizations like the Eagle Lake Area Lions Club.

Pre-registration is required for individuals and groups.

https://docs.google.com/formsd/1qWM2m1twxmuZae0nfHgio78BWB3M3QUT4mzZJMRUXk9E/edit?usp=sharing_eil&ts=68d584f4

KNOW SOMEONE WHO NEEDS HELP?

Contact Eagle Lake City Hall at 507-257-3218 or email jbromeland@eaglelakemn.com.



Scan QR
to Register

BACK TO SCHOOL SAFETY REMINDERS



Lieutenant Mitch Gahler with the Blue Earth County Sheriff's Office would like to remind all residents that school is back in session. Please be alert for students walking, biking, or waiting at bus stops.

When a school bus has its stop arm extended and red lights flashing,
ALL TRAFFIC IN BOTH DIRECTIONS MUST STOP.

This law is critical for the safety of children getting on and off the bus. Drivers should also slow down in school zones and residential areas, remain attentive, and allow extra travel time during busy school hours.

Welcome **EAGLE LAKE ELEMENTARY'S NEW PRINCIPAL**

**The City of Eagle Lake would like to welcome Steve Johanson
as the new principal of Eagle Lake Elementary School!**

The City values and appreciates the partnerships between local government, the School, and Law Enforcement, led by Lieutenant Gahler with the Sheriff's Office. Working together is essential for creating a healthy, safe, and supportive community for students and families. We wish everyone a safe, successful, and rewarding school year.



LITTLE EAGLES PRESCHOOL OPENS IN EAGLE LAKE

Congratulations to Director and Owner Beth Dostal on the official opening of Little Eagles Preschool in Eagle Lake!



A big thank you goes out to the Greater Mankato Growth Ambassadors for hosting a recent ribbon cutting and helping our community celebrate this exciting milestone in Eagle Lake. We also want to acknowledge and thank Pastor Sarah Deutsch and Epiphany Lutheran Church for making existing space available to help meet a critical community need for childcare. Special thanks to the City of Eagle Lake EDA and the RCCIP team for making childcare a priority in our community, and to Stephanie Sanvig with First Children's Finance and Tori Breiter with Families First for their invaluable guidance and behind-the-scenes support. Together, these collaborations show the power of community in action.

Welcome, Little Eagles Preschool—we're so glad you're here!

CONGRATULATIONS TO CLEAR PATH PSYCHIATRY, PLLC ON THEIR RECENT RIBBON CUTTING!



Their new Eagle Lake clinic is a valuable resource, offering essential mental health services and support to our community. By expanding access to care, Clear Path Psychiatry is meeting a critical need, and we are grateful for their dedication to Eagle Lake. We're proud to welcome them and look forward to the positive impact they will have on our residents.



BLUE EARTH COUNTY **CURFEW TIMES**

APPLIES TO THOSE 17 YEARS AND UNDER

AGES 12 AND UNDER

Not allowed in public places or establishments between
9 p.m. and 5 a.m.

AGES 13 - 17

Not allowed in public places or establishments between
11 p.m. and 5 a.m.



Section 4: EXCEPTIONS (A) It is an affirmative defense for a juvenile to prove that: **1.** the juvenile was accompanied by his or her parent, guardian, or other responsible adult. **2.** the juvenile was engaged in a lawful employment activity or was going to or returning home from his or her place of employment. **3.** the juvenile was involved in an emergency situation. **4.** the juvenile was going to, attending, or returning home from an official school, religious, or other recreational activity sponsored and/or supervised by a public entity or a civic organization. **5.** the juvenile was on an errand at the direction of a parent or guardian. **6.** the juvenile was exercising First Amendment rights protected by the United States Constitution or Article I of the Constitution of the State of Minnesota. **7.** the juvenile was engaged in interstate travel. **8.** the juvenile was on the public right-of-way boulevard or sidewalk abutting the property containing the juvenile's residence or abutting the neighboring property, structure, or residence.

ACTIVE ADULTS

JOIN US FOR COFFEE, DONUTS, GUEST SPEAKERS, AND GAMES!

WEDNESDAYS FROM 9-11 A.M. AT CITY HALL • OCTOBER THROUGH MAY

All are welcome, and attendance is free. Come build community and make connections.



A Special Thank You

We extend our gratitude to the dedicated volunteers, Betty Lindvall, Joan Back, Mary Kate Mael, Marlys Schulz, and Joyce Essler, who make the Active Adults Series possible. From organizing events and lining up guest speakers to securing donations that cover costs, their time and efforts ensure this initiative continues to benefit our community. We couldn't do it without them—and we truly appreciate all that they do!

STAY ACTIVE & INDEPENDENT FOR LIFE (SAIL)

A FREE EXERCISE PROGRAM FOR YOU

GOOD THINGS TO KNOW ABOUT THIS CLASS

- SAIL is an evidence-based program designed for men and women aged 55 and over
- The class meets 2x a week all year long
- Hand and leg weights are provided by the Catholic Charities of Southern MN's Active Aging Program
- Class leaders are all volunteers that have been trained to lead the SAIL class
- Everyone pitches in to restore the room, put away weights, etc.
- **This is a FREE class!**

If you have questions call Mary at 507-458-9687 or show up at class 15 minutes early on your first time.

TUESDAYS & THURSDAYS
9:30 - 10:30 a.m.

Epiphany Lutheran Church • Use the West Door



ACTIVE AGING PROGRAMS
Catholic Charities of Southern MN

Wear comfortable clothes and sturdy shoes

Bring your own water bottle as we hydrate often during class

Most importantly, **HAVE FUN!**

DON'T FLUSH YOUR DISPOSABLE WIPES!

Our sewer system was not designed to handle wipes. They gum up the system, clog pipes and pumps, and **COST TAXPAYERS AND RESIDENTS LOTS OF MONEY IN ADDITIONAL MAINTENANCE COSTS.**

Disposable wipes have been causing problems in communities around the country and the City of Eagle Lake is no different. Wipes - used for changing diapers, personal hygiene, house cleaning, and more - cause major problems when flushed down toilets. Though many of these products are labeled "flushable", they are anything but. The same goes for facial tissues, baby wipes, paper towels, and other products.

**IF RESIDENTS USE WIPES, PUT THEM IN THE TRASH
DON'T FLUSH THEM!**

They can cause significant damage to Eagle Lake's lift stations and pumps including blockages, sewer backups, equipment damage, cleaning, and repair costs. **Thank you for your help!**



DON'T FORGET TO **LEAVE THE LEAVES**

Mulching leaves into your lawn can be an excellent way to take care of fallen leaves AND get free, natural fertilizer.

Most deciduous tree leaves contain about
2% NITROGEN
which is a very important nutrient for plants

By mowing over the leaf litter scattered about in the lawn, you are essentially getting a free nitrogen fertilizer application.

TO SUCCESSFULLY MULCH LEAVES *INTO YOUR LAWN*

- It is important to mow frequently so leaf litter doesn't build up.
- The goal is to chop the leaves into small pieces, so they compost in place.
- Mulching only works if you mow frequently, so don't wait too long.
- If your lawn gets covered with many leaves, it will be difficult to fully mulch them in with a mower.



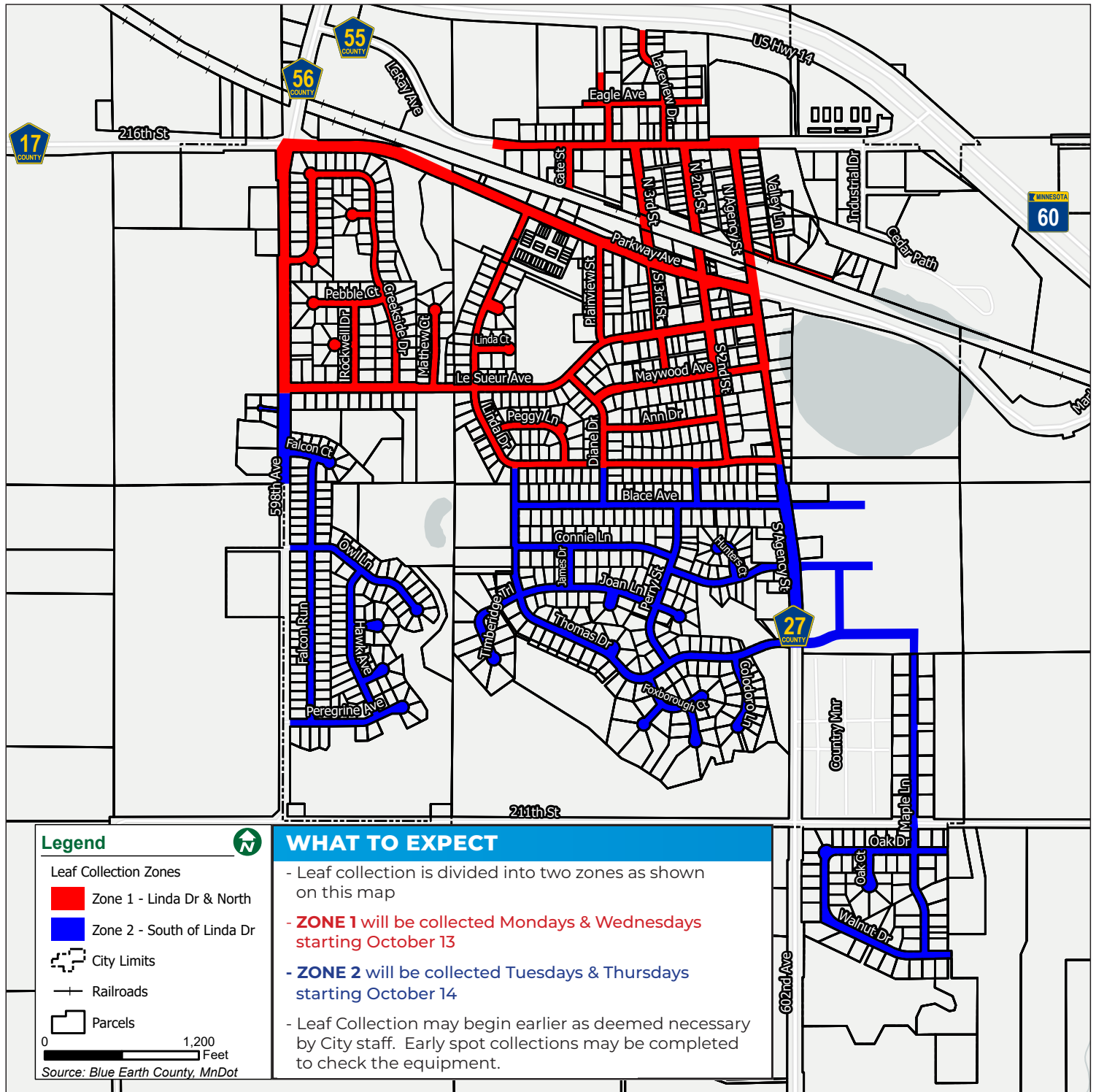
Thick layers of leaves left on the lawn throughout fall and winter can be problematic, shading the turf and increasing the likelihood of snow mold. The best way to know if you have too many leaves on your lawn is to take a few passes with your mower and observe how well the mulching is working.

Leaves are a great source of nutrients for turf, but they can also be great mulch for your gardens. **If you have leaves that fall into garden beds under a tree or in your landscaping, leave them be.** They help insulate plants from harsh winter conditions, conserve moisture, and control weed growth. Those leaves also provide habitat for pollinators.



LEAF COLLECTION

Fall leaf collection will begin the week of October 13 and continue until all leaves are collected or weather no longer permits. Early spot collection may occur as time allows while Public Works tests equipment and prepares routes, but full collection starts Oct. 13.



Leaves must be out by 7:30 a.m. on your scheduled collection day, as the leaf vacuum truck will not return until the next round. Please check the city map to confirm your collection zone and schedule.

PLEASE KEEP LEAVES IN THE BOULEVARD AND OUT OF THE STREET

To ensure efficient pickup, do not rake or blow leaves into the street—instead, place them on the boulevard.
Avoid including sticks, rocks, or other debris, as these can damage equipment.

For questions, call City Hall at **257-3218** or use the **CONTACT US** feature on the City of Eagle Lake website.

CITY OF EAGLE LAKE FALL CLEANUP

Saturday, October 18 • 8am - Noon
Lake Eagle Park

OPEN TO
**EAGLE LAKE
RESIDENTS ONLY**

You may be asked to show proof of residency.
Photo ID or Current Utility Bill.



VEHICLE LINEUP

**Lineup starts on Thomas Drive
at the entrance of the park.**

To get into line enter on LeSueur Ave,
turn right on Linda Dr, and turn right
onto Thomas Dr.

Do NOT block driveways.

SELF UNLOADING

Residents will need to unload
their own materials.

If help is needed, plan ahead
and bring someone with you
to assist unloading.

NO ELECTRONICS COLLECTION

There will **NOT** be an appliance
or electronic pick-up or drop-off

*For a list of **acceptable & unacceptable**
items go to the **CALENDAR** tab and click on
"Fall Clean Up" on Oct. 18th.*

WATER TREATMENT IMPROVEMENTS PROJECT FUNDING UPDATE

The City of Eagle Lake was recently notified that our Fiscal Year 2026 congressionally directed spending (CDS) request for water treatment improvements has advanced. Congressman Brad Finstad included Eagle Lake's project as one of his 15 community project funding requests, and Senator Amy Klobuchar submitted our request to the Senate Appropriations Committee. The House Appropriations Committee's draft legislation included \$1,050,000 in funding (out of our \$5,000,000 request). Both Senators Klobuchar and Tina Smith continue to support this effort.

Please note: funding is not final until Congress passes the appropriations bills and the President signs them into law. On the state level, the MN House Capital Investment Committee has also included Eagle Lake on its upcoming capital investment bonding request tour this fall, where our request totals \$7,077,000.

We thank Representative Luke Frederick and Senator Nick Frenztz for their ongoing support of Eagle Lake's request.

Thank you to all residents who have written letters, made calls, or emailed legislators.
YOUR SUPPORT MAKES A DIFFERENCE!

To access a copy of the City's drinking water report, contact City Hall or you can obtain on the City of Eagle Lake website.

DRINKING WATER **FREQUENTLY ASKED QUESTIONS**

Is Eagle Lake's drinking water safe?

Yes. The City of Eagle Lake works hard to provide water customers with safe and reliable drinking water that meets all federal and state water quality requirements, including the Safe Drinking Water Act. Public water supplies are regulated by the Minnesota Department of Health (MDH), while the City manages and operates the system.

Why does my drinking water look or smell odd?

Hard water is common in Minnesota. Eagle Lake's water supply is classified as hard and contains iron and manganese. Hard water has high mineral content.

High iron can cause red/orange staining of laundry and fixtures, plugging of filters, buildup and reduced capacity of plumbing piping, less efficient softeners, and the plugging of irrigation nozzles and staining landscaping.

High manganese levels can cause black and brown staining, scum on water and coffee, odor, and taste issues. High levels of manganese can cause problems with memory, attention, and motor skills. It can also cause learning and behavior problems in infants and children. **Water can be harmful if the level of manganese is above 100 micrograms per liter (µg/L) or 100 parts per billion (ppb).** A health risk advisory was received from the Minnesota Department of Health in 2022 for having a high level of manganese in our drinking water. The City has two wells and both tested above the MDH health guidelines of 100 parts per billion (ppb) for infants. Manganese concentration in the City of Eagle Lake's water averages 220 ppb. Certain household water treatment units may reduce manganese to safe levels.

How do you know which contaminants are present in Eagle Lake's drinking water?

The City of Eagle Lake routinely works with the Minnesota Department of Health (MDH) to test drinking water for more than 100 contaminants. Eagle Lake's drinking water meets water quality standards for nitrate, arsenic, radium, etc. Iron and manganese levels are above recommended standards. Eagle Lake reports this information regularly in its Drinking Water Report. No water supply is ever completely free of contaminants, so it is not unusual to detect contaminants in small/safe amounts.

Does Eagle Lake treat its drinking water?

Eagle Lake does not currently have a water treatment facility. Instead, public works staff isolate and remove minerals and disinfect the well water before it is distributed to the public. It is also treated with fluoride for dental health and a corrosion inhibitor to keep lead and copper levels low.

What is the City of Eagle Lake doing to address water quality issues?

A water system study was undertaken in the fall of 2020 to investigate water quality issues related to ongoing color and odor complaints received from residents and to identify solutions. Since that time, City officials have explored water quality improvement options.

Eagle Lake secured an option to purchase land needed to construct a new water treatment facility in 2022, knowing the current water system could not treat manganese. Since that time, requests for placement on the Drinking Water Revolving Fund (DWRLF) Intended Use Plan have been submitted to the Minnesota Department of Health DWRLF Program and Minnesota Public Facilities Authority. Eagle Lake's project is currently ranked on the MDH Project Priority List (PPL).

State and federal funding requests will continue to be submitted until necessary funding is secured. The total project cost for the construction of a new water treatment facility is currently projected at \$14,135,000. An average current water user pays approximately \$40 per month for water. Without grant funding, the average user cost is projected to increase to approximately \$111 per month for water. With grant funding, the average user cost is projected to increase to approximately \$75 per month for water based on current anticipated project costs.

Where does Eagle Lake's drinking water come from?

Eagle Lake's drinking water comes from a ground water source: two 270-ft deep wells draw water from the Prairie Du Chien Group and Prairie Du Chien-Jordan aquifers.

How does drinking water get from the source to my home?

Eagle Lake's drinking water system is comprised of two active wells, one water tower for storage, and a distribution system (underground piping) that supplies drinking water to each user.

Where can I find more information?

More information about Eagle Lake's drinking water can be found by accessing the most recent Drinking Water Report. Each report contains monitoring results from Jan. 1 to Dec. 31 and can be obtained online at eaglelakemn.com or by calling or stopping by City Hall to request a copy.

FOR QUESTIONS OR MORE INFORMATION, PLEASE CONTACT

Jennifer Bromeland, City Administrator
507-257-3218 • jbromeland@eaglelakemn.com

Andrew Hartman, Public Works Director
507-257-3218 • ahartman@eaglelakemn.com

PROPOSED PRELIMINARY TAX LEVY

COLLECTIBLE IN 2026

The City Council adopted a resolution at its September 24rd meeting setting the fiscal year 2026 preliminary city budget and property tax levy.

A Truth-N-Taxation hearing has been scheduled for **Monday, December 1, 2025 at 6:00 p.m.**

	2025 FINAL	2026 PROPOSED PRELIMINARY
General Fund	\$1,130,646	\$1,231,171
EDA	\$20,000	\$20,000
Debt Service	\$136,396	\$135,617
TOTAL TAX LEVY	\$1,287,042	\$1,386,788

The preliminary tax levy represents

AN INCREASE OF
\$99,746
OR 7.75%

over the final levy collected in 2025

WHAT DOES THIS MEAN FOR ME?

Below is an illustration of the estimated City tax impact on a residential home valued at \$300,000.

RESIDENTIAL TAXABLE MARKET VALUE OF
\$300,000



ESTIMATED CITY TAX
\$1,262.08

The local property tax rate is a function of the levy and total tax base. Taxable tax capacity is used to determine the local tax rate.

$$[\text{city levy}] / [\text{taxable tax capacity}] = [\text{city tax rate}]$$

Your share of the City levy is based on the taxable value of your property relative to the full value of all other property in the City's taxing district.

WHAT IS A TRUTH-IN-TAXATION NOTICE?

Truth-in-Taxation notices are sent to all property owners each November, before local governments like Eagle Lake finalize their budgets for the coming year. The purpose of the notice is to help you understand how property taxes are determined and how you can get involved with local budgeting and taxation. The notice also tells you when local officials will hold public meetings to discuss and finalize their budgets. These meetings are an opportunity to voice your opinion about the proposed spending. You cannot appeal your property's market value, classification, or proposed taxes at these meetings.

HOW DOES MY PROPERTY VALUE AFFECT TAXES?

The assessor determines the estimated market value (EMV) and classification of your property on January 2 each year. The EMV does not directly affect your property tax bill. Instead, the taxable market value is used to calculate how much of the levy you will pay. Valuations can appreciate or depreciate. The time to appeal a valuation is in April and taxpayers need to contact Blue Earth County directly as the City of Eagle Lake does not determine property valuations.

WHAT IS A PROPERTY TAX STATEMENT?

Property tax statements are mailed to all property owners by March 31 of each year. The statement tells you how much property tax you owe for the year. It provides an itemized list of all your local property taxes (city, county, school district, etc.). It will also include any special assessments on your property. Your property's value and classification from the previous year are used to calculate the tax amount.

CAT AND PET WASTE AWARENESS

Eagle Lake has seen an increase in stray and feral cats. You can help by spaying or neutering your pets, keeping cats indoors or under supervision, and never abandoning unwanted animals. If you can no longer care for a pet, contact an animal shelter or rescue group to find a safe option.

All pet owners should also pick up after their pets. Pet waste contains harmful bacteria and parasites, such as Salmonella, Giardia, and Roundworms, which can be carried by rain or melting snow into local creeks, ponds, and lakes. This pollution can harm humans, other pets, and wildlife, and it adds nutrients that fuel algae growth. Cleaning up after your pets is a simple, effective way to protect water quality and keep our parks, yards, and waterways safe and enjoyable for everyone.

SCOOP THE POOP

WHAT'S SO BAD ABOUT DOG WASTE?

Pet waste contains harmful bacteria, parasites, and nutrients that do not belong in surface waters and can be harmful to humans as well as other pets and wildlife. Rain and melting snow carry these pollutants from yards and park areas to local creeks, ponds, and lakes. Bacteria and other parasites found in pet waste, such as Salmonella, Giardia, and Roundworms, can survive for long period when left on the ground. Reducing the amount of pet waste that ends up in our local surface waters will help improve water quality by decreasing the amount of nutrients that algae thrive on.



AND DON'T FORGET
PICK UP THE PET WASTE IN YOUR OWN YARD

No matter how cute your dog is, it is contributing to the pollution problem if you are not actively on dog 'doo-dy'. Dog owners can easily and economically manage dog waste by cleaning up after your dog. By doing so, you help keep our waters safe and aesthetically pleasing.

YOU CAN HELP

SCOUT IT

Make sure you are keeping an eye on your dog and always clean up their waste.

SCOOP IT

Always have a plastic bag with you when you are walking the dog. Use the bag as a glove to pick up the dog waste. Scoop it up and turn the bag inside out around the waste.

DISPOSE IT

Properly dispose of dog waste by putting it in a trash can.

**NEVER THROW DOG WASTE
DOWN A STORM DRAIN.**

DOG LICENSES

Per Eagle Lake code, all dogs within city limits must be licensed. Once licensed, please be sure that your dog wears its metal tag that is issued with the dog license. This helps the police identify where a dog lives so that it can be returned home if lost versus being impounded.



Please call or stop by City Hall to obtain a dog license application if your dog is not currently licensed.

*Replacement tags are available at **NO CHARGE** if a tag is lost or damaged.*

GOLF CART RULES

- A permit is required to operate a golf cart on the streets of the City of Eagle Lake.
- A slow moving emblem shall be displayed on all golf carts.
- Golf carts must be equipped with a rear view mirror.
- Operators of golf carts must provide driver information and provide proof of liability insurance if requested by law enforcement.
- Golf carts can only be operated on designated roadways from the hours of sunrise to sunset and may not be operated during the hours of sunset to sunrise, in inclement weather, in smoke, fog, or any other condition where visibility is impaired.
- It is unlawful to operate golf carts in parks, on sidewalks or trails.



COST OF PERMIT

\$15.00
FOR 3 YEARS

HOW TO OBTAIN A PERMIT

Residents can obtain a permit application form on the City of Eagle Lake website or stop by City Hall for a hard copy of the form. Once completed, the form can be taken to the Blue Earth County Justice Center to get a permit.

BUILDING AND ZONING PERMITS

Permits are required for almost all construction projects
INCLUDING BUT NOT LIMITED TO

BUILDING PERMIT

*New Homes • Garages • Additions • Decks • Windows
Roofing • Siding • Sheds (Over 200 Square Feet) • Etc.*

*A building permit is also required for any building being moved
onto a lot or any building being demolished.*

ZONING PERMIT

Sheds (200 Square Feet or Less) • Patios • Fences



PLEASE CONTACT CITY HALL AT 507-257-3218 WITH ANY QUESTIONS.

The building and zoning permit application form is available on the City's website or can be obtained at City Hall during normal business hours (Monday-Friday, 7:30 a.m.-4:30 p.m.).

CALL BEFORE DIGGING

Gopher State One Call
1-800-252-1166 or 811

Protect yourselves and your property against underground utility damage and liability. Before digging, anyone in Minnesota must call Gopher State One Call (GSOC) and find out where underground utility lines might be buried (no cost).



EAGLE LAKE SUMMER SOUNDS

The Summer Sounds Committee extends sincere thanks to our community for another successful concert series. Your support and generous sponsorships make Summer Sounds possible each year.

SPECIAL THANKS to our dedicated committee members for their time and effort in bringing great music to Eagle Lake. We also thank Denny Terrell and Jenna Mohr with REMAX for grilling up delicious meals for attendees.



Committee Members

Karli Swearingen, Jennifer Bromeland,
Garrett Steinberg, Anthony White,
Stephanie Noland, and Morgan Schulz

T-BALL RECAP

Earlier this summer, the Mankato East varsity baseball team helped kick off the Eagle Lake T-Ball program by spending a Saturday morning working with participants.

Local youth giving back to the community—your community is proud of you both on and off the ballfield!



A SPECIAL THANK YOU ALSO GOES TO T-BALL COORDINATORS FOR MAKING THE PROGRAM POSSIBLE
Don Wesely, Dave Serdar, and Nick Lewis

NATIONAL NIGHT OUT

Thank you to everyone who came out to Lake Eagle Park to celebrate National Night Out with us! It was a fun evening that brought our community together to promote safety, unity, and summer fun. We were excited to see so many neighbors enjoying the event and showing support for one another. A special thank-you goes to **Jeremy Poland** for providing the evening's wonderful live music. We'd also like to thank **Epiphany Lutheran Church Pastor Sarah Deutsch**, **Eagle Lake Area Lions Club member Terry Kvitek**, the **Summer Sounds Committee**, and **Don Wesely** for their leadership, planning, and coordination. Their hard work behind the scenes and attention to details played a key role in making the night a success.

We are grateful to our generous **event sponsors and partners** who helped make this celebration possible. Thank you to the **Eagle Lake Area Lions Club**, **Epiphany Lutheran Church**, **City of Eagle Lake**, **Summer Sounds**, **RE/MAX Dynamic Agents**, **Eagle Lake Fire Department**, **Blue Earth County Sheriff's Office**, **ADM**, **Bella's House of Doodles**, **Bolton & Menk**, **Bromeland Law**, **Hometown Fitness**, **G Clean**, **Zerne Clean**, **SPX**, **Printwear Graphics**, **Kitchen Baths and More**, **J Beal Real Estate Group**, **Expos**, **Freedom Security**, and **Borgs Home Realty** for their generous support. We'd also like to recognize our **youth prize sponsors**—**Children's Museum of Southern Minnesota – Mankato**, **Dairy Queen – East Mankato**, **McDonald's – Mankato**, and **WowZone – Mankato**— along with our **adult prize sponsors**— **9 Mile Corner Vineyard and Winery – Eagle Lake**, **Mankato MoonDogs Baseball**, **Old Brick House – Mankato**, and **Pickle Barn – Mankato**.

Thank you again to everyone who participated, volunteered, or supported this event — you helped make National Night Out a fun experience for our entire community. We look forward to seeing you again next year!



POLICE • COMMUNITY PARTNERSHIPS

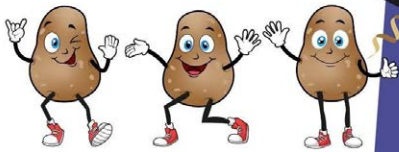
ANOTHER SUCCESSFUL EAGLE LAKE TATOR DAYS!

THANK YOU TO OUR TATOR DAYS VOLUNTEERS

Alicia Quaday, Colleen Bidwell, Perry Madden, Kaelyn Rahe, and Sarah Barna. Their hard work and dedication make this celebration a success!

TATOR DAY BUTTON WINNER

MACY POTTER



Congrats Macy!



WE HOPE KICKBALL WILL BECOME A YEARLY
TATOR DAYS TRADITION!



Eagle Lake Tator Days Medallion Hunt

Sponsored by
Olson Family Chiropractic and Massage!



Congratulations to Ben Dickmeyer

Eagle Lake Royalty Congratulations



Little Miss Tator Tot: Madilyn Holtz
Mr Fry Guy: Briggs Smith



WHAT AN INCREDIBLE EVENING WE HAD AT THE **CULPEPPER & MERRIWEATHER CIRCUS**

We want to take a moment to thank each and every one of you for being part of such a special event. Your support truly helped make this circus an unforgettable experience for our entire community.

We want to extend a special thank you to the **Eagle Lake Area Lions Club** for their hard work in bringing the circus to town. Eagle Lake Area Lions Club President Angela Putnam believed in the idea of bringing the circus to our town, and her hard work and dedication made it happen. Without her passion and commitment, the circus wouldn't have been possible.

A big shout out to the **Eagle Lake City Council** for also believing in the concept of a circus in Eagle Lake being successful and allowing the use of the Lake Eagle Park space to host the event.

We can't forget to recognize the **Blue Earth County Sheriff's Office** personnel - Chief Deputy Jeremy Brennan, Lieutenant Mitch Gahler, Emergency Management Director Eric Weller, and Deputy Nick Lewis - for their hard work behind the scenes, ensuring a safe experience for attendees. They are the real deal and the kind of people who simply show up without being asked. Thank you to the **Eagle Lake Fire Department** personnel - Fire Chief Vern Simpson and Daytime Rescue Members Kelsey Olson and Nona Niemeier - for giving up their evening to be on hand to quickly respond if any medical emergencies. Their readiness to respond at a moment's notice allowed us to enjoy the circus with peace of mind.

Kudos to **Public Works** for prepping the park grounds for the circus to arrive and for keeping it looking so nice. Also, thank you to **City Hall** staff for all of their help with ticket sales.

We appreciate the support of **City Hall, CornerStone State Bank, Community Bank, Hughes Auto, and the WowZone** for their help getting the word out and offering a placeto purchase tickets. Thank you also to LJP for donating the use of dumpsters for the event.

