

Postal Patron
Eagle Lake, MN 56024

PRST STD
ECRWSS
US POSTAGE PAID
EAGLE LAKE, MN
PERMIT NO. 10

CITY OF EAGLE LAKE
PO BOX 159
705 PARKWAY AVENUE
EAGLE LAKE, MN 56024

CITY OF EAGLE LAKE

During the COVID-19 pandemic, there are ways we can help **support our local business community**. This is a uniquely challenging time for small, local businesses. Here are some ways that we can show businesses how much they mean to our community.

7 EASY WAYS TO SUPPORT LOCAL

- 1 Follow, Like, Comment
- 2 Share, Repost, Retweet
- 3 Cheer Them On!
- 4 Leave a Positive Review
- 5 Purchase Gift Cards
- 6 Refer a Friend

7 MOST IMPORTANT

If sick, stay home and shop online or place your order via phone.

Visit the Eagle Lake business directory at <https://eaglelakemn.com/businesses>

SAVE THE DATES

APRIL 3 | EASTER EGG HUNT

APRIL 30 | T-BALL REGISTRATION DEADLINE

MAY 6-9 | CITY-WIDE GARAGE SALE

MAY 15 | SPRING CURBSIDE CLEANUP

MAY 17-19 | WATER MAIN FLUSHING

JULY 15-18 | EAGLE LAKE TATOR DAYS

COMING THIS SUMMER

OUTDOOR MOVIE EVENT

REC ON THE GO

MUSIC ON PARKWAY (3rd Thursday of Every Month)

DATES ARE SUBJECT TO CHANGE

CITY OF EAGLE LAKE NEWSLETTER

SPRING 2021

Population: 3,158

City Hall
PO Box 159
705 Parkway Avenue
Eagle Lake, Minnesota 56024
507-257-3218
eaglelakemn.com



CITY HALL HOURS

Monday - Friday | 7:30 a.m. - 4:30 p.m.

UTILITY PAYMENTS

For utility customer convenience, a drop box is located on the east side of City Hall for utility bill payments and is available seven days a week, 24 hours a day. Utility bill payment options include the following: on-line, auto-pay, by mail, in person, or by phone using a credit or debit card.

QUESTIONS? CONCERNS?

Please let us know your questions and/or concerns directly so that we can do our best to promptly address your questions and/or concerns. City staff can be reached during business hours at City Hall, via phone, or electronically using the **"CONTACT US"** feature on the City of Eagle Lake website at:

<https://eaglelakemn.com/contact>

IMPORTANT NOTE

The City of Eagle Lake communicates with residents using its

City of Eagle Lake Website

City of Eagle Lake Facebook Page

City of Eagle Lake Email Blasts

Mailers

Such as quarterly newsletters mailed to all postal patrons with a 56024-zip code

Questions posed to the City of Eagle Lake via the **Eagle Lake Community Facebook Page** will **not** be answered by City staff as the City of Eagle Lake is not affiliated with the Eagle Lake Community Facebook page. Please contact the City of Eagle Lake directly with any questions that you wish to have answered by City staff.

Stay informed about City news by signing up for City of Eagle Lake email news updates.

SIGN UP ONLINE OR CONTACT CITY HALL

EAGLE LAKE CITY COUNCIL MEETINGS



HELD THE FIRST MONDAY OF EVERY MONTH • 6 P.M.
ALL MEETINGS ARE OPEN TO THE PUBLIC

At the January 4th meeting, the City Council voted to return to in person meetings with safety protocols in place such as masks and social distancing. The number of persons from the public that can be safely seated in the Council Chambers during a meeting is limited at the present time due to social distancing requirements.

If you wish to address the City Council in person, please contact City Hall to be added to the agenda. Written comments or questions for the City Council can be submitted via USPS, email, or dropped off at City Hall to be read at the meeting.

The City purchased audio and video infrastructure to live stream City Council meetings for the purpose of better engaging the public and to accommodate those that may not be able to attend meetings in person. To view meetings, please visit the City of Eagle Lake website at eaglelakemn.com and click on the "City of Eagle Lake MN City Council Meetings" icon (as shown on the right) on the home page of the website.



NEW PARTNERSHIP!

The City is pleased to partner with Mankato East High School's Work-Based Learning (WBL) Program to utilize a student intern that will be trained to operate the audio and video equipment used to live stream meetings.

EAGLE LAKE T-BALL REGISTRATION

REGISTRATION IS DUE BY
APRIL 30

T-BALL IS OPEN TO
YOUTH AGES
4-7



REGISTRATION FEE
INCLUDES A T-SHIRT!

\$20.00
CASH OR CHECK ONLY

Payment can be dropped off during regular business hours or placed in the secure box on the east side of City Hall during afterhours.

Registration forms can be picked up at City Hall during normal business hours Monday-Friday, 7:30 a.m.- 4:30 p.m. or printed off of the City of Eagle Lake website at:
https://eaglelakemn.com/application/files/3816/1616/8541/Registration_Form_2021.pdf

ANY QUESTIONS PLEASE CONTACT

T-Ball Volunteer Coordinator Jeremy Horkey at jeremy@borgshomes.com
or call City Hall at 507-257-3218

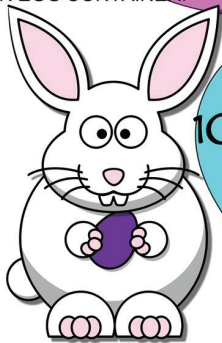
COMMUNITY HAPPENINGS

HOP ON OVER TO THE EAGLE LAKE EASTER EGG HUNT

FAMILY
FUN!

PLEASE WEAR A FACE COVERING,
PRACTICE SOCIAL DISTANCING, DRESS
FOR THE WEATHER, AND BRING YOUR
OWN EGG CONTAINER!

7,000 EGGS
PRIZES!!!



SAT. APRIL 3
10:00 A.M. SHARP!

LAKE EAGLE
PARK
*MEET AT THE
PAVILLION
208 THOMAS
DRIVE

SPONSORED BY THE EAGLE LAKE AM. LEGION FAMILY,
EAGLE LAKE LIONS CLUB & 61V2U
CONTACT: JAN LANGE CALL/TEXT 507-420-4023
EMAIL: JEDLANGE17@CHARTER.NET

EAGLE LAKE CITY WIDE GARAGE SALE

MARK YOUR CALENDAR
MAY 6-9

GET ON THE MAP

Contact us on Facebook at
EAGLE LAKE CITY-WIDE GARAGE SALE
if you are having a sale and would
like to be added to the map.

THANK YOU
Curtis and Ann Peters

PARKS PROJECT



PHASE 1
NEW EQUIPMENT & NEW PARK
AT LAKE EAGLE PARK

PHASE 2
PAVILLION
AT EAGLE HEIGHTS



**DONATE TO ENHANCE
OUR PARKS**

BY CHECK/CASH AT CITY HALL • ON GOFUNDME

JOIN OUR
FACEBOOK GROUP

Eagle Lake Parks
and Recreation



MARK YOUR CALENDAR
MUSIC ON PARKWAY

TENTATIVE SCHEDULE

3RD THURSDAY OF EVERY MONTH

MAY | JUNE | JULY | AUGUST
7 P.M. - 10 P.M.

More specific information will be mailed to all postal patrons
as we get closer to the first performance date.



A matching grant was obtained from the Southern Minnesota Initiative Foundation (SMIF) in 2019 for the purpose of bringing Music on Parkway to Eagle Lake in 2020. Due to COVID-19, last year's program was postponed. Committee members are hard at work planning this year's Music on Parkway series while monitoring COVID-19 restrictions and the Governor's executive order as it relates to outdoor gatherings.

ANY QUESTIONS FEEL FREE TO CONTACT ANY ONE OF THE FOLLOWING COMMITTEE MEMBERS:

Tim Auringer, Garrett Steinberg, JaDee Pals, Perry Madden, Jennifer Bromeland

*Music on Parkway is organized in collaboration with the **Eagle Lake Community Development Foundation***

EAGLE LAKE AMERICAN LEGION POST 617
FARMERS MARKET

The Legion will be offering space for anyone interested in participating in a "Farmers Market".

DATE

EVERY WEDNESDAY
JUNE THROUGH LABOR DAY

TIME

4:00 P.M. - 6:00 P.M.
APPROX.

LOCATION

AMERICAN LEGION POST 617
PARKING LOT

There is no fee to participate and no obligation to participate weekly, but please be respectful of the Legion's property.

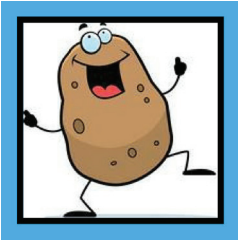
ANY QUESTIONS, PLEASE CONTACT TAMIE FROM THE LEGION AT (507) 257-3130

COMING THIS SUMMER
OUTDOOR MOVIE EVENT & REC ON THE GO
STAY TUNED FOR MORE INFORMATION

City staff and Mankato Area Public Schools Community Education and Recreation staff are actively planning an outdoor movie event and another Rec on the Go season.

A LISTING OF DATES AND LOCATIONS TO BE ANNOUNCED LATER THIS SPRING





SAVE THE DATES

EAGLE LAKE TATOR DAYS

Event plans will be published and mailed to postal patrons as we near the festivity dates. For the most up-to-date information and details, “like” and follow the Facebook event pages including “Eagle Lake Tator Days.”

SCHEDULED FOR
JULY
15-18

RECRUITING VOLUNTEERS

Each year, the committee encourages **NEW VOLUNTEERS** to join in on the fun. Some volunteers focus on planning, while others focus on helping out during the week of the festivities.

If you're interested, but just not sure where to start, consider contacting the committee via Facebook Messenger, reach out to a Committee Member, or send an email to tatordays@hotmail.com.

WE'D LOVE TO HAVE YOU JOIN OUR CREW!

Committee members are monitoring COVID-19 restrictions and the Governor's executive order as it relates to indoor and outdoor gatherings.

2ND ANNUAL WINTER ACTIVITIES WAS A SUCCESS!



Eagle Lake Parks and Rec in partnership with Mankato Area Public Schools Community Education and Recreation recently held the 2nd Annual Winter Activities Event at Lake Eagle Park.

THANK YOU

Thanks to all event participants and sponsors for making the 2nd annual winter activities event a success.



THANK YOU TO ICE RINK VOLUNTEERS

THANK YOU to the following ice rink volunteers that spent countless hours prepping and maintaining the rink this season:

Anthony White | Judd Schulz | Brady DesLauriers

Thank you also to the Schulz family for allowing the use of their Zamboni

SCOOP THE POOP

WHAT'S SO BAD ABOUT DOG WASTE?

Pet waste contains harmful bacteria, parasites, and nutrients that do not belong in surface waters and can be harmful to humans as well as other pets and wildlife. Rain and melting snow carry these pollutants from yards and park areas to local creeks, ponds, and lakes. Bacteria and other parasites found in pet waste, such as Salmonella, Giardia, and Roundworms, can survive for long periods when left on the ground. Reducing the amount of pet waste that ends up in our local surface waters will help improve water quality by decreasing the amount of nutrients that algae thrive on.

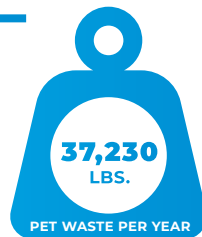
No matter how cute your dog is, it is contributing to the pollution problem if you are not actively on dog 'doo-dy'. Dog owners can easily and economically manage dog waste by cleaning up after your dog. By doing so, you help keep our waters safe and aesthetically pleasing.

DID YOU KNOW

One 40 lb. dog generates

0.6 LBS WASTE PER DAY → **219 LBS** WASTE PER YEAR

The City of Eagle Lake has
170 LICENSED DOGS
If the average dog weighed
40 lbs. that would equate to



YOU CAN HELP

SCOUT IT

Make sure you are keeping an eye on your dog and always clean up their waste.

SCOOP IT

Always have a plastic bag with you when you are walking the dog. Use the bag as a glove to pick up the dog waste. Scoop it up and turn the bag inside out around the waste.

DISPOSE IT

Properly dispose of dog waste by putting it in a trash can.

**NEVER THROW DOG WASTE
DOWN A STORM DRAIN.**

AND DON'T FORGET
PICK UP THE PET WASTE IN YOUR OWN YARD

SPRING CURBSIDE CLEANUP

OPEN TO EAGLE LAKE RESIDENTS ONLY

SATURDAY
MAY 15

All small, loose items must be bagged or boxed and set out at the curb no later than

7:00 A.M.
SAT. MAY 15



No bag or box should weigh more than
50 POUNDS

If small items are not bagged or boxed, they will
NOT BE PICKED UP

Exceptions include items such as a curtain rod, lamp, or any item larger than a garbage bag or box.

UNACCEPTABLE WASTE

Hazardous waste, explosives, radioactive materials, cleaning fluids, crankcase oils, paints, acids, caustics, poisons, pesticides, drugs, pathological or biological waste, sanitary sewage, human or animal waste, sludge (including sewage sludge, septic and cesspool pump outs), human or animal remains, solvents, liquid waste, street sweepings, mini waste, incinerator residue, transformers, batteries, aerosol cans, trees, ashes, rock, demolition debris, foundry sand, concrete rubble, gravel or construction debris, fluorescent bulbs, bath or hot tubs, mattress or box spring.

ACCEPTABLE WASTE

General Garbage

Electronics

That Do Not Have Video Display Devices

Furniture

Including Couch, Recliner, etc.

Pedal Bikes

Grill Without Propane Tank

WHAT NOT TO DO



IF YOU PLACE LOOSE ITEMS AT THE CURB LIKE THIS,
THEY WILL NOT BE PICKED UP

ELECTRONICS COLLECTION

Electronics can be recycled at

CITY HALL

May 15th from 8:00 a.m.-noon

For a listing of fees, contact City Hall or visit eaglelakemn.com.



BUILDING AND ZONING PERMITS

Building permits are required for almost all construction projects including but not limited to new homes, garages, additions, decks, sheds over 200 square feet, windows, roofing, siding, etc. A building permit is also required for any building being moved onto a lot or any building being demolished. A zoning permit is required for sheds 200 square feet or less, patios, and fences.



The building and zoning permit application form is available on the City's website or can be obtained at City Hall during normal business hours (Monday-Friday, 7:30 a.m.-4:30 p.m.).

Please contact City Hall at 507-257-3218 with any questions.

CALL BEFORE DIGGING

Gopher State One Call
1-800-252-1166 or 811

Protect yourselves and your property against underground utility damage and liability. Before digging, anyone in Minnesota must call Gopher State One Call (GSOC) and find out where underground utility lines might be buried (no cost).



EMPLOYEE BENEFITS SURVEY

DO YOU WORK IN MANUFACTURING, DISTRIBUTION, OR CONSTRUCTION?

Help employers get a better understanding of what benefits employees want by completing a survey being performed in conjunction with Greater Mankato Growth. All survey respondents will be entered into a drawing for a chance to win a gift card for participating.

When available, the survey will be posted on the City's Facebook page and website, or you can contact **Ryan Vesey** at rvesey@greatermankato.com and ask that the survey be emailed to you.

METRO^{ON}NET

Metro Fibernet, LLC (MetroNet) will be constructing and operating a fiber to the premises network (FTTP) for the purpose of providing state of the art all fiber voice, video, and internet services. MetroNet will construct an FTTP Network capable of providing voice, video, and internet fiber services to residents and businesses in the city of Eagle Lake. The FTTP network will be solely funded by MetroNet.

MESSAGE FROM
POLICE CHIEF JOHN KOPP
AND POLICE DEPARTMENT

DOGS

With spring here, please be a responsible dog owner. Please keep your dog on a leash when not on your property. Also, please pick up after your dog and dispose of dog waste properly. It is a violation of city ordinance not to pick up dog waste and not keeping your dog on a leash when not on your property.

SUSPICIOUS VEHICLES AND PEOPLE

Please keep an eye out for yourself and your neighbors. If you see a suspicious person or vehicle in your area, please call 911 to report it as it is happening. Many times, we get calls after the fact about suspicious people or vehicles and we are limited on what we can do to investigate such things.

TALL GRASS

With spring here, our grass will be growing again. Please cut your grass before it gets to be 6 inches high. It is a violation of our city ordinance to have grass higher than 6 inches high. You will get a notice with a time limit to get your grass cut from the Police Department. If your grass is not cut within the specified time, the city will cut your grass and you will be given a bill for the city cutting your grass.

SPEEDING

Please obey all speed limits in town. As well as obeying all speed limits, please keep a watch out for walkers, bikers, skateboarders, and roller bladders who are out enjoying the spring weather. Please keep an extra eye out for children in town. With the spring weather, more children will be out enjoying the weather.



INFORMATION FROM
THE OFFICE OF TRAFFIC SAFETY

A DIVISION OF THE MINNESOTA DEPARTMENT OF PUBLIC SAFETY



BICYCLE LAWS

BICYCLISTS MUST

- Ride on the road and must ride in the same direction as traffic
- Obey all traffic control signs and signals, just as motorists
- Signal turns and ride in a predictable manner
- Use a headlight and rear reflectors when it is dark

MOTORISTS MUST

- Maintain a three-foot clearance when passing a bicyclist

PEDESTRIAN LAWS

PEDESTRIANS MUST

- Obey traffic control devices, and when no traffic control device is present, motorists must stop for crossing pedestrians within a marked crosswalk or at an intersection with no marked crosswalk

MOTORISTS MUST

- Treat every corner and intersection as a crosswalk, whether it's marked or unmarked, and drivers must stop for crossing pedestrians.

MESSAGE FROM
FIRE CHIEF DAN RUSCHMEYER
AND FIRE DEPARTMENT

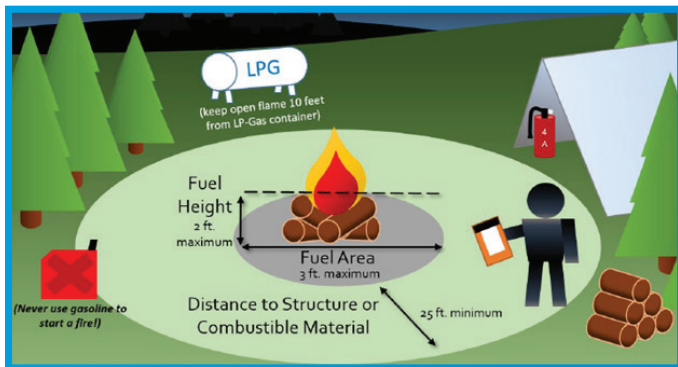
RECREATIONAL FIRES & PORTABLE OUTDOOR FIREPLACES

RECREATIONAL FIRE

Has a total fuel area of 3 feet or less in diameter and 2 feet or less in height.

PORTABLE OUTDOOR FIREPLACE

A portable, outdoor, solid fuel burning fireplace that may be constructed of steel, concrete, clay, or other noncombustible material.



FIRE SAFETY & COMPLIANCE

- Recreational fires must be at least 25 feet from all buildings or combustible material (wood, paper, and plastics).
- Recreational fires must be constantly attended until the fire is extinguished.
- A means of controlling the fire (such as a garden hose, dirt, or sand) must be available at the site at the time of the fire.
- The only material permitted in a recreational fire is wood from trees, small branches, brush, or charcoal.
- Recreational fires must be immediately extinguished if they pose a fire safety risk or if they are not in compliance with the statements above.

A NOTE OF **APPRECIATION**

The Eagle Lake Fire Department would like to thank Colby Winkler. Colby is a longtime resident of Eagle Lake and owner of Lee's Champion Tae Kwon Do Academy in Mankato, MN. Colby allowed the department to come and learn about self-defense at his training facility a few months ago. Colby's expertise and knowledge gave the department ideas of how to interact during calls of violence. Additionally, he gave insight on what types of threats or potential threats we may encounter at calls.

RECRUITING
NEW MEMBERS

*Are you bored?
Do you want to be a part of a team, outside your family or work?
Do you want hands on training and help your community?
Well, you are in luck!*

The Eagle Lake Fire Department is looking for new members! Residents are encouraged to apply.

We have openings on our daytime rescue and volunteer fire department. The fire department has monthly meetings and drills the second and fourth Tuesday of every month. If you do not have training, the department will pay for you to attend classes. If you have thought about joining the department or would like more information, please email Brady at elfd@eaglelakemn.com.

To apply, you can fill out an application at City Hall, or we can email you an application.

MESSAGE FROM
EAGLE LAKE COMMUNITY FORESTRY CORPS
VIEN NGUYEN, MEMBER



Greetings, Eagle Lake community members. Residents are invited to volunteer their trees on private property to be assessed by the Community Forestry Corps.

Ever wonder about the condition of that tree in your yard or what benefits it provides? Now is your chance for quantitative data. There is **NO COST TO PARTICIPATE**; you just need to give permission to allow your tree(s) to be included in the tree inventory database.

MORE THAN
HALF THE TREES

IN EAGLE LAKE ARE LOCATED ON PRIVATE PROPERTY

*Your participation is **vital** for a more complete view of Eagle Lake's tree inventory.*

Tree assessments will take place beginning in spring. The process should take no more than 15 minutes and will be performed by the Community Forestry Corps member.

Please contact City Hall at 257-3218 with any questions about the project or to be added to the assessment list now.

You don't have to be present for the assessment, but you will be contacted ahead of time to schedule a time slot.

MESSAGE FROM
PUBLIC WORKS DIRECTOR BRIAN GOETTL
AND PUBLIC WORKS DEPARTMENT

WATER MAINS

Water mains will be flushed the week of May 17th. The flushing schedule is subject to weather and other factors.

STREET SWEEPING AND FILLING OF POTHOLES

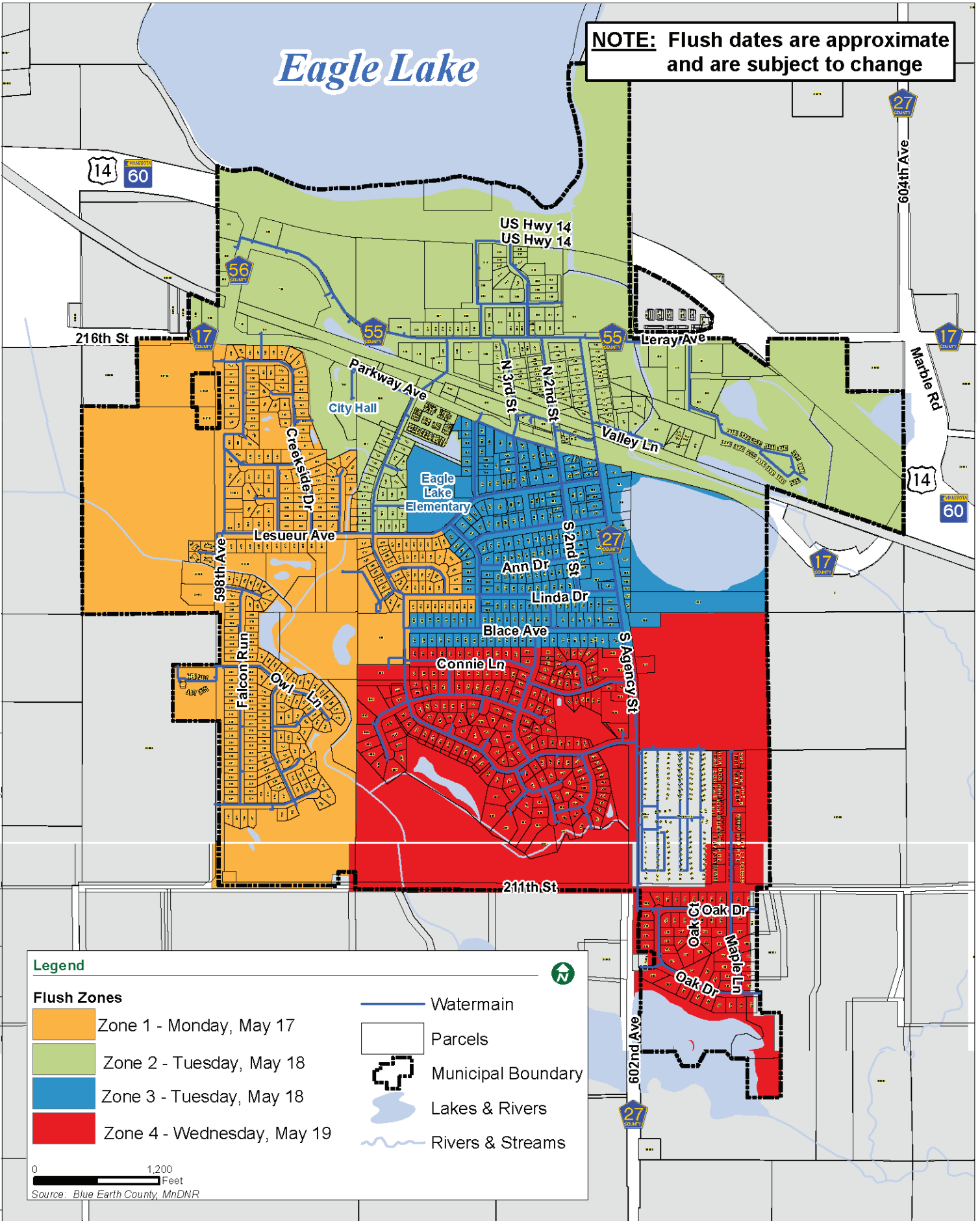
Street sweeping and filling of potholes will take place at the end of April.

PARKS IMPROVEMENTS

New playground equipment will be installed later this spring and summer at the new park in the Eagle Heights Subdivision and at Lake Eagle Park.

Eagle Lake

NOTE: Flush dates are approximate and are subject to change



WATER TREATMENT SYSTEM STUDY

The City of Eagle Lake engaged Bolton and Menk in the fall of 2020 to complete a water treatment system study to provide information necessary to establish priorities, plan, fund, and implement required future water system improvements.

A consultant with Bolton and Menk attended the February 1, 2021 City Council meeting to orally present the water treatment study findings. The City and its consultant with Bolton and Menk are exploring water treatment alternatives identified during the study to determine feasibility. Residents that experience color and odor issues are asked to notify City Hall so that the general location of complaints can be tracked.

INTERSECTION IMPROVEMENTS FOR HWY 14/COUNTY ROAD 56 IN EAGLE LAKE

Following an analysis of intersection alternatives, the Minnesota Department of Transportation (MnDOT), Blue Earth County, and the City of Eagle Lake are moving forward with a Restricted Crossing U-Turn (also referred to as a J-Turn) at the intersection of Hwy 14 and Blue Earth County Road 56 in Eagle Lake. Construction is planned for 2022.

Additionally, MnDOT recently installed pavement markings on CR 56 to encourage motorists to stop closer to Hwy 14, which improves visibility for CR 56 traffic as they either cross or turn onto Hwy 14. MnDOT worked closely with the project partners, as well as collected input from the community prior to arriving at the selected alternative of an RCUT. The public was invited to share feedback on the proposed concepts through a virtual presentation and online survey. For a summary of the community feedback, visit mndot.gov/d7/projects/hwy14eaglelake/public-input.html.

Additional information about the intersection, including Frequently Asked Questions, is available on the project website at mndot.gov/d7/projects/hwy14eaglelake.

CSAH 27 RECONSTRUCTION IN EAGLE LAKE

Blue Earth County in partnership with the City of Eagle Lake, is planning to reconstruct the roadway and the underlying city watermain and sanitary sewer primarily due to the failing condition of the City owned utilities. As part of the road construction project, sidewalk will be constructed on the west side of the road from Thomas Dr. to Parkway Ave. and on both the east and west sides of the street from Valley Lane to Le Ray Ave.

The project is scheduled for construction in 2021 using a combination of County State Aid, Local and City of Eagle Lake and State Funds. For project updates, visit: <https://www.blueearthcountymn.gov/CSAH27>.

MnDOT Project Update

Over the next few years, MnDOT has roadway projects planned near Eagle Lake that may impact the community in their area travels. Below is an overview of the projects. As projects near their construction year, more information will be available (i.e. timeline of work, detour routes, etc.).

Hwy 60 Lake Connection *(2021 Construction)*

- This is a long-term pavement fix from north of the Hwy 14/Hwy 60 intersection east of Eagle Lake to just west of the Hwy 13/Hwy 60 intersection near Waterville. The project also includes a full reconstruction through Madison Lake, including utilities, curb and gutter, added lighting, and pedestrian upgrades. Traffic will be detoured in two phases during construction, which will start in April.
- Project website: [Information - Hwy 60 Project - MnDOT \(state.mn.us\)](https://www.mndot.gov/d7/projects/hwy60-lake-connection)
- Interactive detour map: [TH-60: The Lake Connection Construction Map \(arcgis.com\)](https://arcgis.com)

Hwy 169/Hwy 22/Hwy 99 St. Peter *(2023 Construction)*

- After conducting a traffic analysis and gathering input from the community, MnDOT will be constructing a dual left turn at the intersection of Hwy 169/Hwy 22 and a Restricted Crossing U-Turn (J-Turn) at the intersection of Hwy 169/Hwy 99. A concept of the intersection upgrades can be viewed here – [mndot.gov/d7/projects/hwy169-22-99/concepts/concept-d.pdf](https://www.mndot.gov/d7/projects/hwy169-22-99/concepts/concept-d.pdf)
- Project website: [Information - Hwy 169/Hwy 22/Hwy 99 Project - MnDOT \(state.mn.us\)](https://www.mndot.gov/d7/projects/hwy169-hwy22-hwy99-st-peter)

Hwy 22/Augusta Dr. Roundabout *(2024 Construction)*

- To improve safety at the intersection of Hwy 22/Augusta Dr. in Mankato, a roundabout will be constructed. This project is currently in pre-design and currently planned for 2024 construction.
- More information will be available in conjunction with the Hwy 22 Mankato to St. Peter project, given its proximity and potential construction year.

Hwy 22 Mankato to St. Peter *(2024 Construction)*

- This is a long-term pavement fix from Mankato to St. Peter that will reduce crashes and delay along the corridor. It will become a three-lane segment, with added passing lanes as well as turn lanes at major access points. Additionally, modifications will be made at every intersection along Hwy 22 (notably, CR 57/N. Riverfront Dr. will be a Continuous T and CR 21 will be a roundabout).
- The right of way and design work needed for a trail will be incorporated with this project, but a trail from St. Peter to Mankato is not yet funded.
- A project website will be developed soon, along with an option to sign up for email updates. This information will be shared with the public once available.

Stay up to date on South Central Minnesota MnDOT projects:

Project websites: [mndot.gov/d7/projects.html](https://www.mndot.gov/d7/projects.html)

South Central MnDOT Facebook group: [facebook.com/groups/MnDOTsouthcentral](https://www.facebook.com/groups/MnDOTsouthcentral)

South Central MnDOT Twitter page: twitter.com/mndotscentral

EAGLE LAKE STAFF MEMBERS

ADMINISTRATION

Jennifer J. Bromeland, *City Administrator* | jbromeland@eaglelakemn.com

Kerry Rausch, *Deputy City Clerk* | krausch@eaglelakemn.com

Mandy Auringer, *Administrative Clerk* | mauringer@eaglelakemn.com

POLICE

John Kopp, *Chief of Police* | elpd@eaglelakemn.com

Dustin Jensen, *Full-Time Officer* | **Logan Peterka**, *Full-Time Officer*

Benjamin Romig, *Part-Time Officer* | **Zachary Keeseey**, *Part-Time Officer*

PUBLIC WORKS

Brian Goettl, *Public Works Director* | bkgoettl@eaglelakemn.com

Andrew Hartman, *Public Works Supervisor* | elpw@eaglelakemn.com

Michael Nicklay, *Public Works Worker* | **Brian Shoemaker**, *Part-Time Public Works Worker*

Jerry Haber, *Seasonal Public Works Worker*

FIRE DEPARTMENT

Dan Ruschmeyer, *Fire Chief* | elfdchief@eaglelakemn.com

EAGLE LAKE ELECTED OFFICIALS

Tim Auringer, *Mayor* | mayorauringer@eaglelakemn.com

Dennis Terrell, *Council* | dterrell@eaglelakemn.com

Garrett Steinberg, *Council* | gsteinberg@eaglelakemn.com

Beth Rohrich, *Council* | brohrich@eaglelakemn.com

Anthony White, *Council* | awhite@eaglelakemn.com

Please contact City Hall at 507-257-3218 with any questions.