

Postal Patron
Eagle Lake, MN 56024

PRST STD
ECRWSS
US POSTAGE PAID
EAGLE LAKE, MN
PERMIT NO. 10

CITY OF EAGLE LAKE
PO BOX 159
705 PARKWAY AVENUE
EAGLE LAKE, MN 56024



SUPPORT LOCAL BUSINESSES

Visit the Eagle Lake business directory at
<https://eaglelakemn.com/businesses>

DONATE TO CANS FOR KIDS

Donating your aluminum cans to "Cans for Kids" is
an easy way to support the Eagle Lake parks.

The proceeds from the cans go towards the parks.



DONATION **LOCATION**

Near the Eagle Lake water tower
PLEASE DO NOT BAG CANS

Thank you for your help supporting the parks.

SAVE THE DATE

FEBRUARY 3 • 2 - 4 P.M.

5th Annual Winter Activities at Lake Eagle Park

NOTABLE DATE

FEBRUARY 19 | City Hall Closed

CITY OF EAGLE LAKE NEWSLETTER

Winter 2024

POPULATION: 3,331

Source: MN State Demographer's 2022 Population Estimate

CITY HALL

PO Box 159
705 Parkway Avenue
Eagle Lake, Minnesota 56024

507-257-3218
eagelakemn.com



CITY HALL HOURS

Monday - Friday | 7:30 a.m. - 4:30 p.m.

UTILITY PAYMENTS

For utility customer convenience, a drop box is located on the east side of City Hall for utility bill payments and is available seven days a week, 24 hours a day. Utility bill payment options include the following: on-line, auto-pay, by mail, in person, or by phone using a credit or debit card.

PAPERLESS BILL OPTION

eagelakemn.com/residents/pay-utility-bill

HAVE A QUESTION OR CONCERN?

Please contact us and we will do our best to answer your question or address your concern. City staff can be reached during business hours at City Hall, via phone, email, or electronically using the “CONTACT US” feature on the City of Eagle Lake website at:

eagelakemn.com/contact

IMPORTANT NOTE

The City of Eagle Lake communicates with residents using its

City of Eagle Lake

Website | Facebook Page | Email Blasts | Connect App

& Mailers

Such as quarterly newsletters mailed to all postal patrons with a 56024-zip code

Questions posed to the City of Eagle Lake via the **Eagle Lake Community Facebook Page** will **not** be answered by City staff as the City of Eagle Lake is not affiliated with the Eagle Lake Community Facebook page. Please contact the City of Eagle Lake directly with any questions that you wish to have answered by City staff.

Stay informed about City news by signing up for City of Eagle Lake news updates.

SIGN UP ONLINE OR CONTACT CITY HALL

EAGLE LAKE CITY COUNCIL MEETINGS



HELD THE FIRST MONDAY OF EVERY MONTH • 6 P.M.

All meetings are open to the public

To view meetings, please visit the City of Eagle Lake website at eagelakemn.com and click on the “City of Eagle Lake MN City Council Meetings” icon (as shown on the right) on the home page of the website.



HOLIDAY WINTER EVENTS RECAP



MEDALLION HUNT WINNER

THANK YOU CONTEST PRIZE SPONSOR **CORNERSTONE STATE BANK**

Congratulations to Alexis Anderson
FOR FINDING THE MEDALLION

The medallion was found in the sand volleyball court at Frazee Park. Alexis won a \$100 prize sponsored by CornerStone State Bank in Eagle Lake.



Thank you to all that participated in this year's medallion hunt. We hope that you had fun and participate again next year.



6TH ANNUAL

HOLIDAY LIGHTS CONTEST WINNERS

Congratulations TO THIS YEAR'S HOLIDAY LIGHTS CONTEST WINNERS

**BEST
HOLIDAY LIGHTS**

521 LeSueur Avenue

**PEOPLE'S
CHOICE**

103 Blace Avenue



Winners received a \$100 cash prize sponsored by Community Bank in Eagle Lake and a commemorative ornament and yard sign courtesy of SPX Sports.



COMMUNITY HAPPENINGS

If you have a Community Happening to share that is free and open to the community, please contact City Hall and we will do our best to help spread the word.

DONATIONS

If you or your business are interested in becoming a donor of an activity or event that is free and open to all community members (e.g., Music on Parkway, Outdoor Movies, Holiday Lights Contest, Winter Activities at Lake Eagle Park, etc.), please contact City Hall for more information.



THANK YOU JOHN KOPP

For 24 years of dedicated service to the Eagle Lake Police Department.

2023 SUNFLOWER CONTEST WINNERS

BECKY SORENSON and **BRANDY & KAIRU JOHANSON SEBERA**

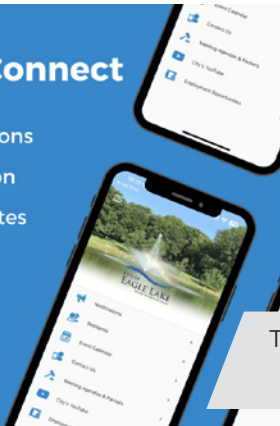
Winners received a prize from Drummers Garden Center and Floral.



CITIZEN NOTIFICATIONS MOBILE APP

Download Eagle Lake Connect

- Receive Notifications
- Access Information
- View Latest Updates
- And more...



The City of Eagle Lake, MN is excited to launch Eagle Lake Connect, a push notification mobile application powered by GOGov. This application puts the power of city hall in the palm of your hand.

The app is a great source of information for city news, events, service interruptions and updates, and important links to the city website. City staff can streamline important community communications and information to citizens in more efficient ways.

To download the free app, go to the Apple App Store or Google Play Store and search **"Eagle Lake Connect"** to find the app.

NEW RESIDENT **WELCOME BAG**

The Eagle Lake Economic Development Authority (EDA) has launched a new resident welcome bag initiative to welcome new residents to the community. The welcome bags contain items donated by businesses and service organizations.

If you recently moved to Eagle Lake, be sure to stop by City Hall and pick up a welcome bag!

SOLICITORS, TRANSIENT MERCHANTS & PEDDLERS

Each year, door-to-door peddling and soliciting raises questions from Eagle Lake residents. The City encourages residents to report any suspicious activity to the Blue Earth County Sheriff's Office by calling 911 or using the non-emergency line by contacting 507-304-4863.

SAFETY REMINDERS

If you feel uncomfortable opening your door, **DON'T.**

Don't let someone in your home, even if they have a license. Ask the person to show you their license. Contact City Hall with any questions or to verify that a person is registered. Please note that issuance of a license does not constitute an endorsement by the City of Eagle Lake for the particular company/business. The City urges residents to do their due diligence in checking out the vendor/company by contacting the Better Business Bureau, obtaining referrals, etc.

LIONS CLUB **HAT & MITTEN DRIVE**

The Eagle Lake Area Lions Club recently collected

47 HATS | 6 COATS | 61 PAIRS OF MITTENS

during a hat and mitten drive. The purpose of the drive was to collect hats and mittens for Eagle Lake Elementary School students to ensure that all students have the proper winter gear available to be able to go outdoors during recess and play.



EAGLE LAKE **TRANSITIONING BUS SERVICE**

Effective January 1st, 2024, True Transit is the transportation service provider for Eagle Lake residents.

To schedule transportation, please contact True Transit at

507-388-8783



TRUE TRANSIT
Town Rural Urban Express



Eagle Lake was recently certified as a **“Gig Town”** during a short program and ribbon cutting at City Hall.

“We are excited about the designation and look forward to the opportunities that all-fiber networks bring to residents and businesses to help Eagle Lake be a future-ready city.”

Jennifer J. Bromeland
City Administrator

AED FOR CITY HALL

The City of Eagle Lake recently received an AED for City Hall through its partnership with the Blue Earth County Sheriff's Office. The AED is in a case that is mounted to the wall in the hallway of City Hall near the entrance to the Council Chambers. Eric Weller, Emergency Management Director with Blue Earth County, provided an AED demonstration to City staff.

An AED, or automated external defibrillator, is used to help those experiencing sudden cardiac arrest. It's a sophisticated, yet easy-to-use, medical device that can analyze the heart's rhythm and, if necessary, deliver an electrical shock, or defibrillation, to help the heart re-establish an effective rhythm. AED's are designed for the public with limited to no experience needed to operate.



STORM DRAIN STENCILING



THANK YOU

to all the community volunteers that helped with storm drain stenciling.

WHY ARE WE STENCILING? Because storm drains do not treat stormwater, hazardous pollution is transported directly into local waterways. To prevent further contaminants from entering the drains, we need to spread awareness to our community. The stencils—highly visible to neighbors on sidewalks and streets—will cause residents to think twice before dumping their waste down the drain. By stenciling messages directly next to storm drains, we are increasing residential awareness about the connection between stormwater and local waterways.

IMPORTANT SAFETY REMINDER

The ice at the pond at Lake Eagle Park is not maintained by the City and is **NOT SAFE FOR ACTIVITIES** such as playing or skating, and the same applies to all stormwater ponds in Eagle Lake.

Thank you for your cooperation!



ICE RINK RULES & SCHEDULE

PLEASE READ THE RULES AND FOLLOW THE SCHEDULE



- No tobacco products allowed
- No fighting
- No hockey pucks on the ice during family skating hours
- No foul language
- **BE SAFE.** Use of rink is at your own risk

MONDAY, WEDNESDAY, FRIDAY

3PM - 6PM – Hockey

6PM - 9PM – Family/Open Skating

TUESDAY, THURSDAY

3PM - 6PM – Family/Open Skating

6PM - 9PM – Hockey

SATURDAY

9AM - 1PM – Open

1PM - 5PM – Hockey

5PM - 9PM – Family/Open Skating

SUNDAY

9AM - 1PM – Open

1PM - 5PM – Family/Open Skating

5PM - 9PM – Hockey



BE KIND AND RESPECTFUL TO OTHER USERS OF THE RINK.



2023-2024 EAGLE LAKE REPORT

TO THE
MANKATO AREA PUBLIC SCHOOLS
(MAPS) SCHOOL BOARD

Follow the link below to view the report

<https://rb.gy/5vfd6p>

EAGLE LAKE PARTNERS WITH THE BLUE EARTH COUNTY SHERIFF'S OFFICE

The City of Eagle Lake is partnering with the Blue Earth County Sheriff's Office to provide policing in the community and meet the public safety needs of residents and businesses.

A contract was approved by both the Eagle Lake City Council and Blue Earth County Board of Commissioners which took effect January 1, 2024. The new contract replaces the Eagle Lake Police Department and provides dedicated law enforcement coverage 18-20 hours a day, Monday-Friday, and 12 hours a day, Saturday-Sunday. All other times and resources will be covered with a response from the County Sheriff's Office at no additional cost. This new agreement ensures 24/7 coverage for Eagle Lake.



An open house will be scheduled so that community members can meet the Sheriff's Office personnel that will be working in Eagle Lake. The date and time of the open house has not yet been determined at this time. An announcement with details will be made shortly.

WHERE DO I CALL TO REPORT A CRIME OR OTHER LAW ENFORCEMENT CONCERN?

If there is an emergency, call 911. For non-emergencies, you can call a 24/7 non-emergency line at 507-304-4863 and your call will be answered by the Blue Earth County Dispatch Center.

HOW CAN I RECEIVE A COPY OF A REPORT OR ACCESS OTHER LAW ENFORCEMENT RECORDS?

Contact the Blue Earth County Sheriff's Office Records Division at 507-304-4814.

WHERE DO I GO IF I NEED TO SPEAK WITH A DEPUTY?

Deputies that are assigned to Eagle Lake will be using the police office in City Hall. Driving to City Hall to contact a deputy is not recommended. Instead, call the Sheriff's 24/7 non-emergency line at 507-304-4863. A deputy can return your call, arrange to meet you, or drive to your location. If it is an emergency, call 911.

DOG LICENSES

Per Eagle Lake code, all dogs within city limits must be licensed. Once licensed, please be sure that your dog wears its metal tag that is issued with the dog license. This helps the police identify where a dog lives so that it can be returned home if lost versus being impounded.



Please call or stop by City Hall to obtain a dog license application if your dog is not currently licensed.

*Replacement tags are available at **NO CHARGE** if a tag is lost or damaged.*

DRINKING WATER

FACT SHEET

IS EAGLE LAKE'S DRINKING WATER SAFE?

Yes. The City of Eagle Lake works hard to provide water customers with safe and reliable drinking water that meets all federal and state water quality requirements, including the Safe Drinking Water Act. Public water supplies are regulated by the Minnesota Department of Health (MDH), while the City manages and operates the system.

WHY DOES MY DRINKING WATER LOOK OR SMELL ODD?

Hard water is common in Minnesota. Eagle Lake's water supply is classified as hard and contains iron and manganese. Hard water has high mineral content.

High iron can cause red/orange staining of laundry and fixtures, plugging of filters, buildup and reduced capacity of plumbing piping, less efficient softeners, and the plugging of irrigation nozzles and staining landscaping.

High manganese levels can cause black and brown staining, scum on water and coffee, odor, and taste issues. High levels of manganese can cause problems with memory, attention, and motor skills. It can also cause learning and behavior problems in infants and children. Water can be harmful if the level of manganese is above 100 micrograms per liter (µg/L) or 100 parts per billion (ppb). A health risk advisory was received from the Minnesota Department of Health in 2022 for having a high level of manganese in our drinking water. The City has two wells and both tested above the MDH health guidelines of 100 parts per billion (ppb) for infants. Manganese concentration in the City of Eagle Lake's water averages 220 ppb. Certain household water treatment units may reduce manganese to safe levels.

HOW DO YOU KNOW WHICH CONTAMINANTS ARE PRESENT IN EAGLE LAKE'S DRINKING WATER?

The City of Eagle Lake routinely works with the Minnesota Department of Health (MDH) to test drinking water for more than 100 contaminants. Eagle Lake's drinking water meets water quality standards for nitrate, arsenic, radium, etc. Iron and manganese levels are above recommended standards. Eagle Lake reports this information regularly in its Drinking Water Report. No water supply is ever completely free of contaminants, so it is not unusual to detect contaminants in small/safe amounts.

DOES EAGLE LAKE TREAT ITS DRINKING WATER?

Eagle Lake does not currently have a water treatment facility. Instead, public works staff isolate and remove minerals and disinfect the well water before it is distributed to the public. It is also treated with fluoride for dental health and a corrosion inhibitor to keep lead and copper levels low.

WHAT IS THE CITY OF EAGLE LAKE DOING TO ADDRESS WATER QUALITY ISSUES?

A water system study was undertaken in the fall of 2020 to investigate water quality issues related to ongoing color and odor complaints received from residents and to identify solutions. Since that time, City officials have explored water quality improvement options.

Eagle Lake secured an option to purchase land needed to construct a new water treatment facility in 2022, knowing the current water system could not treat manganese. Since that time, requests for placement on the Drinking Water Revolving Fund (DWRLF) Intended Use Plan have been submitted to the Minnesota Department of Health DWRLF Program and Minnesota Public Facilities Authority. Eagle Lake's project is currently ranked on the MDH 2024 Project Priority List (PPL).

State and federal funding requests will continue to be submitted until necessary funding is secured. The total project cost for the construction of a new water treatment facility is currently projected at \$14,135,000. An average current water user pays approximately \$40 per month for water. Without grant funding, the average user cost is projected to increase to approximately \$111 per month for water. With grant funding, the average user cost is projected to increase to approximately \$75 per month for water based on current anticipated project costs.

WHERE DOES EAGLE LAKE'S DRINKING WATER COME FROM?

Eagle Lake's drinking water comes from a ground water source: two 270-ft deep wells draw water from the Prairie Du Chien Group and Prairie Du Chien-Jordan aquifers.

HOW DOES DRINKING WATER GET FROM THE SOURCE TO MY HOME?

Eagle Lake's drinking water system is comprised of two active wells, one water tower for storage, and a distribution system (underground piping) that supplies drinking water to each user.

WHERE CAN I FIND MORE INFORMATION?

More information about Eagle Lake's drinking water can be found by accessing the most recent Drinking Water Report. Each report contains monitoring results from Jan. 1 to Dec. 31 and can be obtained online at eaglelakemn.com or by calling or stopping by City Hall to request a copy.

FOR ADDITIONAL INFORMATION, PLEASE CONTACT THE FOLLOWING

Jennifer J. Bromeland | City Administrator
jbromeland@eaglelakemn.com or 507-257-3218

Andrew Hartman | Public Works Director
ahartman@eaglelakemn.com or 507-257-3218

MINNESOTA HOUSE AND SENATE CAPITAL INVESTMENT BONDING COMMITTEES

LEARN MORE ABOUT EAGLE LAKE'S CAPITAL BUDGET REQUEST



The City of Eagle Lake is seeking funding for the construction of a new water treatment facility to address water quality issues, including high levels of manganese. City officials maintain communication with local legislators - Representative Luke Frederick and Senator Nick Frentz - about issues important to Eagle Lake such as the need for a water treatment facility.



For more information about the project, please refer to the following:

<https://eaglelakemn.com/wp-content/uploads/Eagle-Lake-Water-Treatment-Improvements-Funding-Brochure.pdf>



Congressman Brad Finstad visited with Eagle Lake officials in early January to discuss funding needed for the construction of a Water Treatment Plant, Highway 14 safety concerns, and the need to identify funding sources for a new fire hall.

SCOOP THE POOP

WHAT'S SO BAD ABOUT DOG WASTE?

Pet waste contains harmful bacteria, parasites, and nutrients that do not belong in surface waters and can be harmful to humans as well as other pets and wildlife. Rain and melting snow carry these pollutants from yards and park areas to local creeks, ponds, and lakes. Bacteria and other parasites found in pet waste, such as Salmonella, Giardia, and Roundworms, can survive for long periods when left on the ground. Reducing the amount of pet waste that ends up in our local surface waters will help improve water quality by decreasing the amount of nutrients that algae thrive on.

No matter how cute your dog is, it is contributing to the pollution problem if you are not actively on dog 'doo-dy'. Dog owners can easily and economically manage dog waste by cleaning up after your dog. By doing so, you help keep our waters safe and aesthetically pleasing.



AND DON'T FORGET
PICK UP THE PET WASTE IN YOUR OWN YARD

YOU CAN HELP

SCOUT IT

Make sure you are keeping an eye on your dog and always clean up their waste.

SCOOP IT

Always have a plastic bag with you when you are walking the dog. Use the bag as a glove to pick up the dog waste. Scoop it up and turn the bag inside out around the waste.

DISPOSE IT

Properly dispose of dog waste by putting it in a trash can.

**NEVER THROW DOG WASTE
DOWN A STORM DRAIN.**

BUILDING AND ZONING PERMITS

Permits are required for almost all construction projects
INCLUDING BUT NOT LIMITED TO

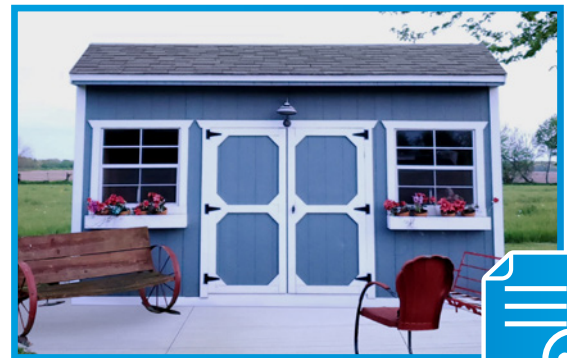
BUILDING PERMIT

*New Homes • Garages • Additions • Decks • Windows
Roofing • Siding • Sheds (Over 200 Square Feet) • Etc.*

*A building permit is also required for any building being moved
onto a lot or any building being demolished.*

ZONING PERMIT

Sheds (200 Square Feet or Less) • Patios • Fences



PLEASE CONTACT CITY HALL AT 507-257-3218 WITH ANY QUESTIONS.

The building and zoning permit application form is available on the City's website or can be obtained at City Hall during normal business hours (Monday-Friday, 7:30 a.m.-4:30 p.m.).

CALL BEFORE DIGGING

Gopher State One Call
1-800-252-1166 or 811

Protect yourselves and your property against underground utility damage and liability. Before digging, anyone in Minnesota must call Gopher State One Call (GSOC) and find out where underground utility lines might be buried (no cost).

SNOW EMERGENCY & SNOW REMOVAL

INFORMATION

During an emergency, it is unlawful for any person, as driver or operator of a vehicle, or as the registered owner of such vehicle, to park, stop or leave standing, or cause, allow, or permit to be parked, stopped, or left standing, whether knowingly or unknowingly, any such vehicle upon any street within City limits until the emergency has been lifted.

SECTION 4.100 EMERGENCY PARKING REGULATIONS

DEFINITIONS

For the purpose of this section, the term "Emergency" shall mean any condition upon any public street, including the presence of snow, freezing rain, sleet, ice or other phenomenon, which condition creates or is likely to create any hazardous road condition or impedes or is likely to impede the free movement of traffic, when such conditions have been declared by the Public Works Director or in his absence, the on-duty Maintenance Worker.

DECLARATION

Upon the existence of an emergency as defined herein, the Public Works Director or in his absence, the on-duty Maintenance Worker, declares that an emergency exists, whereupon such person shall notify the media (radio and TV) and request that such media cooperate with the City in giving notice to such emergency to the community. The emergency regulations set forth below shall become effective one (1) hour after such notice has been given by the City to such news media.

UNLAWFUL ACTS

During an emergency, it is unlawful for any person, as driver or operator of a vehicle, or as the registered owner of such vehicle, to park, stop or leave standing, or cause, allow, or permit to be parked, stopped, or left standing, whether knowingly or unknowingly, any such vehicle upon any City street until the emergency has been lifted.

TOWING

Upon the existence of an emergency as defined above, the City may tow vehicles in violation of this ordinance as authorized in Minnesota State Statute 169.041.

SIDEWALKS

Eagle Lake property owners are responsible for keeping all sidewalks along their property clear of snow and ice. **City Code requires residents to clear their sidewalks within 24 hours after a snowstorm.** City crews are responsible for clearing sidewalks at City facilities. Snow removed from sidewalks and driveways should be placed in the boulevard area or on private property and NOT in the public roads.

DRIVEWAYS

Snow moved by a snowplow blade has no place to go but in the road right-of-way, which includes driveways. Many times, snowplowing forms snow drifts across driveway approaches, which may create hardships for some residents. However, the City possesses neither the personnel nor equipment to clear driveway approaches within the City. Snow removal of the driveway approaches are the responsibility of residents.

TRAILS

Some paved sections of the City's trail system will be cleared of snow by City crews as time allows. The trails are the last priority and will be cleared after all other roads in the City have been addressed.

MAIL BOXES

In most cases, damage occurs during the plowing process because aged posts or improperly mounted boxes are unable to withstand the rigors of the winter plowing season. The City will replace the mailbox and/or post if it is struck and damaged by a snowplow. Mailboxes should be installed to withstand heavy or wet snow coming off the end of the plow. The final cleaning adjacent to mailboxes is the responsibility of the property owner. If damage occurs due to snow discharge or snow storage, the City will not be responsible for repairs.



STORMWATER CORNER

Salt pollutes.

When snow and ice melts, the salt goes with it, washing into our lakes, streams, wetlands, and groundwater. Once in the water, there is no way to remove the chloride, and it takes only one teaspoon of road salt to permanently pollute five gallons of water. Less is more when it comes to applying salt because at high concentrations, chloride can harm the fish and plant life in our waters.



Follow these simple rules to protect our clean water

There are many ways to reduce salt use while maintaining high safety standards.

Shovel. The more snow and ice you remove manually, the less salt you will have to use and the more effective it can be. Whether you use a shovel, snow blower, snow plow, or ice scraper, get out there as early as you can and keep up with the storm. You may even decide that salt isn't needed.

15 degrees is too cold for salt. Most salts stop working at this temperature. Use sand instead for traction (but note that sand does not melt ice).

Slow down. Drive for the conditions and make sure to give plow drivers plenty of space to do their work.

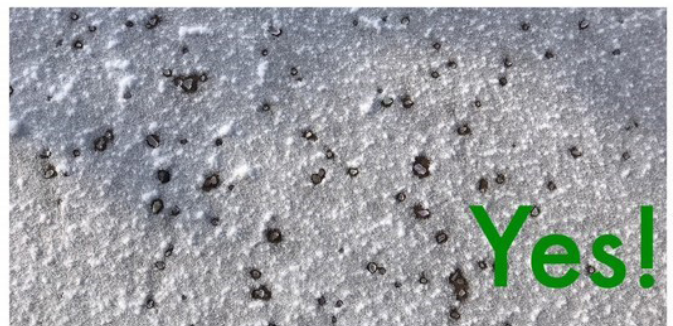
Be patient. Just because you don't see salt on the road doesn't mean it hasn't been applied. These products take time to work.

More salt does not mean more melting. Use less than four pounds of salt per 1,000 square feet (an average parking space is about 150 square feet). One pound of salt is approximately a heaping 12-ounce coffee mug. You may consider purchasing a hand-held spreader to help you apply a consistent amount.

Sweep up extra. If salt or sand is visible on dry pavement it is no longer doing any work and will be washed away. Use this salt or sand somewhere else.

Visit the MPCA chloride web pages for more information:

www.pca.state.mn.us/water/salt-and-water-quality



HALT THE SALT

REDUCE YOUR SALT USE THIS WINTER SEASON!

There are many ways to reduce salt use while still maintaining safety standards.

WHY SHOULD I REDUCE MY SALT USE?

Salt contains chloride which is harmful to our sidewalks, driveways, roads, waterways, and wildlife. The salt that is applied to melt snow and ice flows into ditches, storm drains, lakes, streams, wetlands, and groundwater. **It only takes 1 teaspoon of salt to permanently pollute 5 gallons of water.** Water permanently polluted by salt may be unsafe for drinking and may no longer be suitable habitat for fish and other organisms. Reducing your salt use helps minimize human health and environmental concerns and can also be cost-effective!

HOW CAN I REDUCE MY SALT USE?

REMOVING SNOW AND ICE MANUALLY IS A GUARANTEED WAY TO REDUCE YOUR SALT USE.

There are lots of tools available for removing snow manually, such as snow shovels, snow blowers, snowplows, ice scrapers, and even leaf blowers! Once the surface is clear, you may not need to apply salt or sand. Applying sand can be helpful for traction but can still pollute our waterways. Less snow and ice on the pavement means less salt and sand you will have to use, and more money saved. (Mixing sand and salt does not increase its effectiveness).

SPREAD SALT LIGHTLY. A 12-ounce coffee mug is about 1 pound of salt and will effectively cover a 20-foot two-car driveway or 10 sidewalk squares.

Consider purchasing a hand spreader to spread a consistent amount. **SCATTER MATTERS – more salt does not mean faster melting or more melting.**

SWEEP UP THE EXTRA. If your pavement is dry (meaning free of snow or ice) and salt or sand is visible on the pavement, the salt or sand is no longer doing any work and is likely to be washed away. You can sweep up the extra salt or sand to use somewhere else, or you can save it for next time.

BE AWARE OF TROUBLE SPOTS. If you have common icy spots each winter (i.e., leaky gutter, sloped sidewalk, areas that do not get much sun), keep track of them and fix what you can in the warmer seasons to avoid creating icy conditions next winter. This will lessen the amount of salt you will need to apply, if any.

BE FAMILIAR WITH THE TYPE OF SALT YOU ARE WORKING WITH. Sodium chloride (NaCl) or rock salt only works above 15°F, and temperatures vary among different types of salt. Read the label of the salt you are working with to find out what the temperature threshold is for that product. It might be too cold to apply salt!



Visit the MPCA's website for more information.

<https://www.pca.state.mn.us/news-and-stories/snow-removal-do-it-better-cheaper-and-pollution-free>



EMERALD ASH BORER

Written By: Nathaniel Hyde, Community Forestry Member



WHAT IS EMERALD ASH BORER?

Emerald Ash Borer (EAB) is a non-native invasive species of beetle that was introduced from Asia and is now spreading throughout the United States. EAB is detrimental to native species of ash trees (Green, White and Black). The larval tunnels disrupt the vascular system of the tree which leads to dieback and eventual tree death in about 3-5 years.

SIGNS OF EMERALD ASH BORER

- S-shaped larvae tunnels under bark
- D-shaped exit holes where beetles emerge
- Woodpecker damage on bark (larger holes and bark removal)
- Thinning upper canopy
- Epicormic shoots (new branch growth near base of tree)



WHAT CAN WE DO?

There are many things we can do to help stop the spread of EAB. Knowing how to properly identify an ash tree is a good start. Understanding the different signs of EAB and how to monitor for it is very beneficial for the community. Chemical treatments are a great preventative option for the protection of high value trees. Removing and properly disposing of dying ash wood is also critical in reducing the spread. Replacing dying ash trees with other tree species will help provide for a more biodiverse ecosystem.

DON'T MOVE FIREWOOD!

The transporting of wood infested with EAB is a major factor for the widespread infestation throughout the state. By limiting the movement of any infested wood, we can help slow the spread of EAB. The Minnesota Department of Agriculture (MDA) has enacted a quarantine to limit the movement of firewood and ash material into Minnesota and out of infested counties. The MDA issues quarantines for all counties known to have EAB to reduce the risk of further spreading the tree-killing insect. Blue Earth County is listed under this quarantine zone due to the many confirmed cases in the Mankato area. MDA certified firewood can be transported across quarantine boundaries as it has been heat treated.

If you have any tree related questions or would like a tree species identified, please contact our community forestry member:

Nathaniel Hyde

nathaniel.hyde@mnsu.edu
507-257-3218 (Eagle Lake City Hall)

Resource for further reading on EAB, ash tree identification, and other common tree diseases/invasive insects:

<https://eaglelakemn.com/wp-content/uploads/Emerald-Ash-Borer-Informational-Guide-Nathaniel-Hyde.pdf>

FINAL TAX LEVY

The Eagle Lake City Council adopted the 2024 budget and tax levy at its December 4, 2023 meeting.

	2023 FINAL	2024 FINAL	DIFFERENCE
General Fund	\$769,952	\$945,045	\$175,093
EDA	\$51,000	\$51,000	\$0
Debt Service	\$152,310	\$132,939	(\$19,371)
TOTAL TAX LEVY	\$973,262	\$1,128,984	\$155,722 OR 16%

Walk with us! COMMUNITY MEMBER 62+

We are happy that our school spaces (DMMS, Lincoln, & Eagle Lake) can be utilized to assist you in staying well. The service is **free** to community members 62+, advance registration required.

January 3, 2024 through March 28, 2024.

DAKOTA MEADOWS MIDDLE SCHOOL
1900 Howard Drive, North Mankato

and

EAGLE LAKE ELEMENTARY
500 LeSueur Avenue, Eagle Lake

Monday and Wednesday 6-8pm
January 15 and 22 • 1-3pm



LINCOLN COMMUNITY CENTER
110 Fulton Street, Mankato

Tuesday and Thursday 6-8pm



STAY ACTIVE & INDEPENDENT FOR LIFE (SAIL)

A FREE EXERCISE PROGRAM FOR YOU

GOOD THINGS TO KNOW ABOUT THIS CLASS

- SAIL is an evidence-based program designed for men and women aged 55 and over
- The class meets 2x a week all year long
- Hand and leg weights are provided by the Catholic Charities of Southern MN's Active Aging Program
- Class leaders are all volunteers that have been trained to lead the SAIL class
- Everyone pitches in to restore the room, put away weights, etc.
- **This is a FREE class!**

If you have questions call Mary at 507-458-9687 or show up at class 15 minutes early on your first time.

TUESDAYS & THURSDAYS

9:30 - 10:30 a.m.

Epiphany Lutheran Church • Use the West Door



ACTIVE AGING PROGRAMS
Catholic Charities of Southern MN

Wear comfortable clothes and sturdy shoes

Bring your own water bottle as we hydrate often during class

Most importantly, **HAVE FUN!**

EAGLE LAKE STAFF MEMBERS

ADMINISTRATION



Jennifer J. Bromeland
City Administrator
jbromeland@eaglelakemn.com



Olivia Adomabea
Community Dev. Coordinator
oadomabea@eaglelakemn.com



Kerry Rausch
Deputy City Clerk
krausch@eaglelakemn.com



Mandy Auringer
Administrative Clerk
mauringer@eaglelakemn.com

PUBLIC WORKS



Andrew Hartman
Public Works Director
ahartman@eaglelakemn.com



Michael Nicklay
Public Works Supervisor



Nathan Ruel
Public Works Worker



Jacob Beckmann
Public Works Worker



Jim Anderson
Part-Time Public Works Worker

FIRE DEPARTMENT



Vern Simpson
Fire Chief
elfdchief@eaglelakemn.com

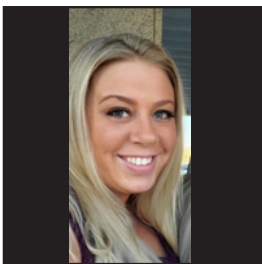
CONTACT US

Please contact City Hall at

507-257-3218

with questions.

EAGLE LAKE ELECTED OFFICIALS



Lisa Norton
Mayor
mayornorton@eaglelakemn.com



Beth Rohrich
Council
brohrich@eaglelakemn.com



Garrett Steinberg
Council
gsteinberg@eaglelakemn.com



Anthony White
Council
awhite@eaglelakemn.com



John Whittington
Council
jwhittington@eaglelakemn.com